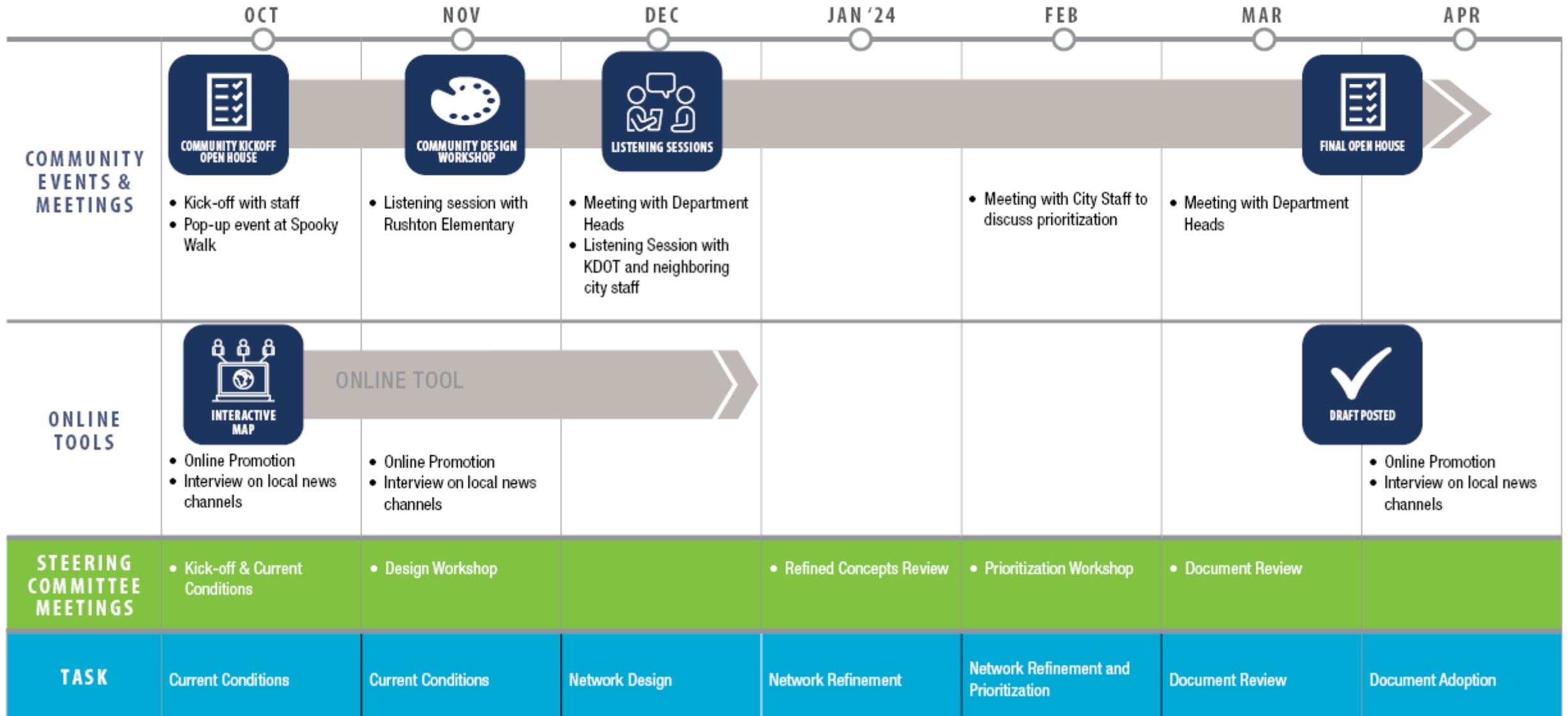


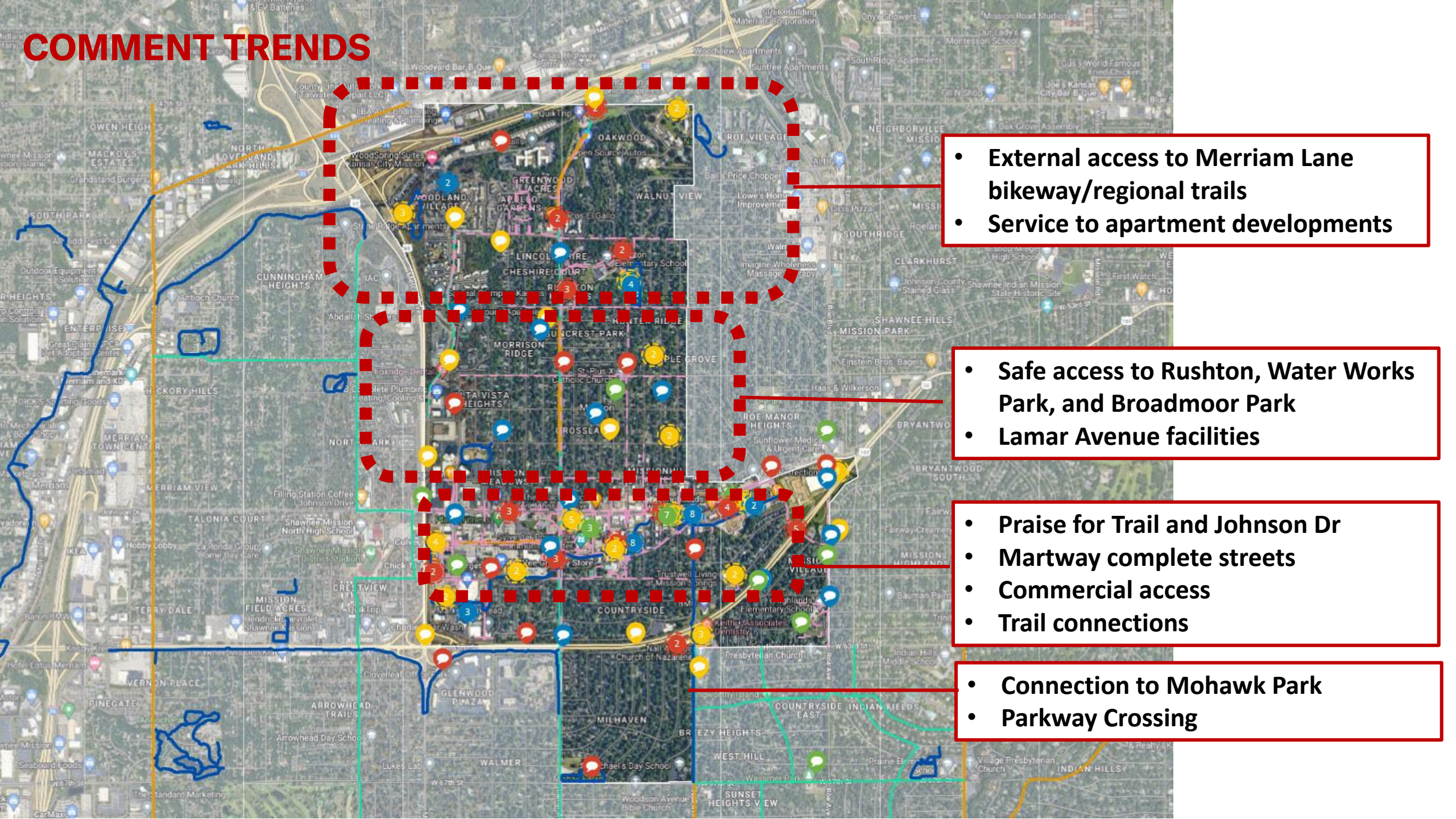
MISSION:MOBILITY ACTIVE TRANSPORTATION PLAN WORKSHOP MEETING 3



WHERE WE'RE AT IN THE PROCESS



COMMENT TRENDS

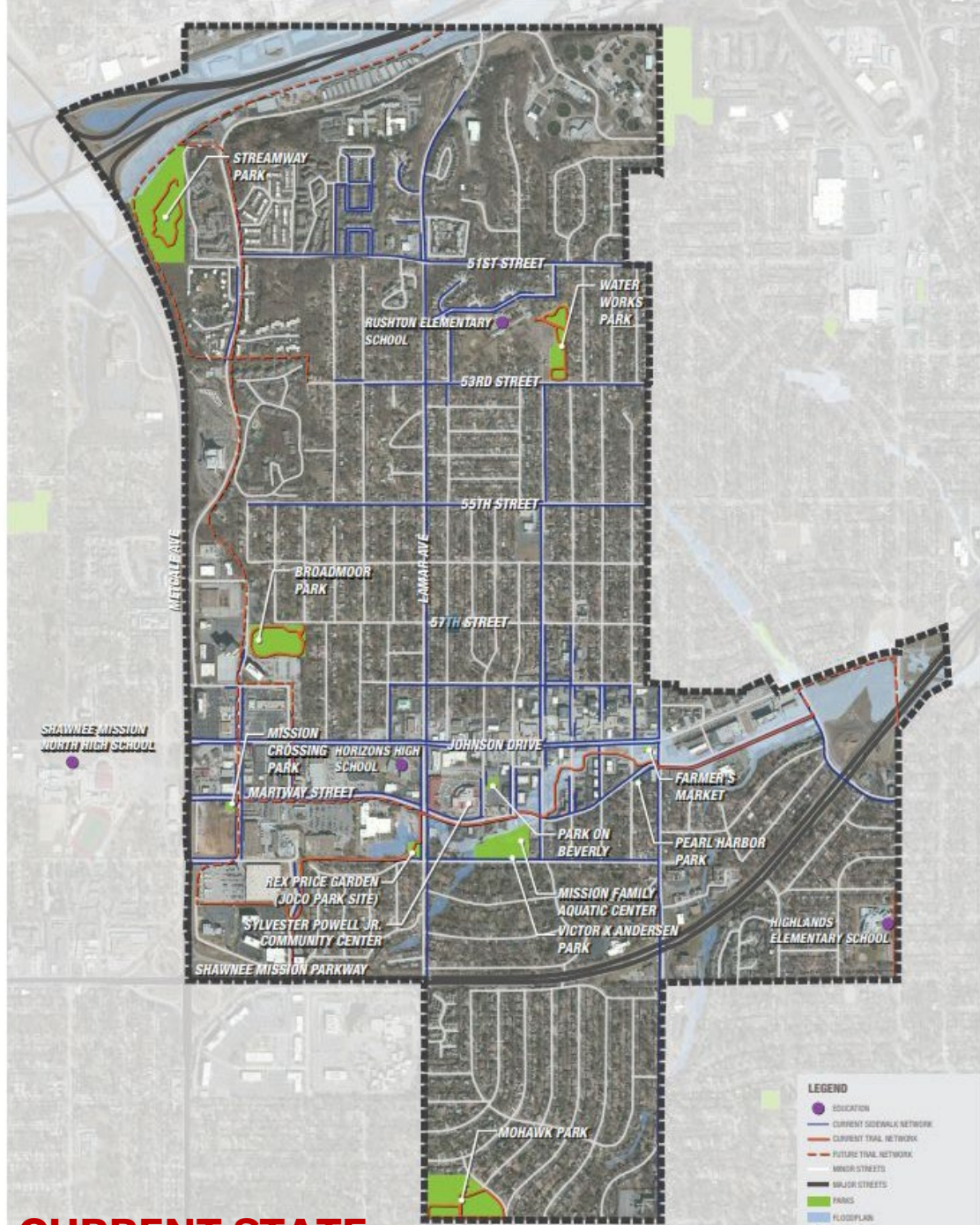


- External access to Merriam Lane bikeway/regional trails
- Service to apartment developments

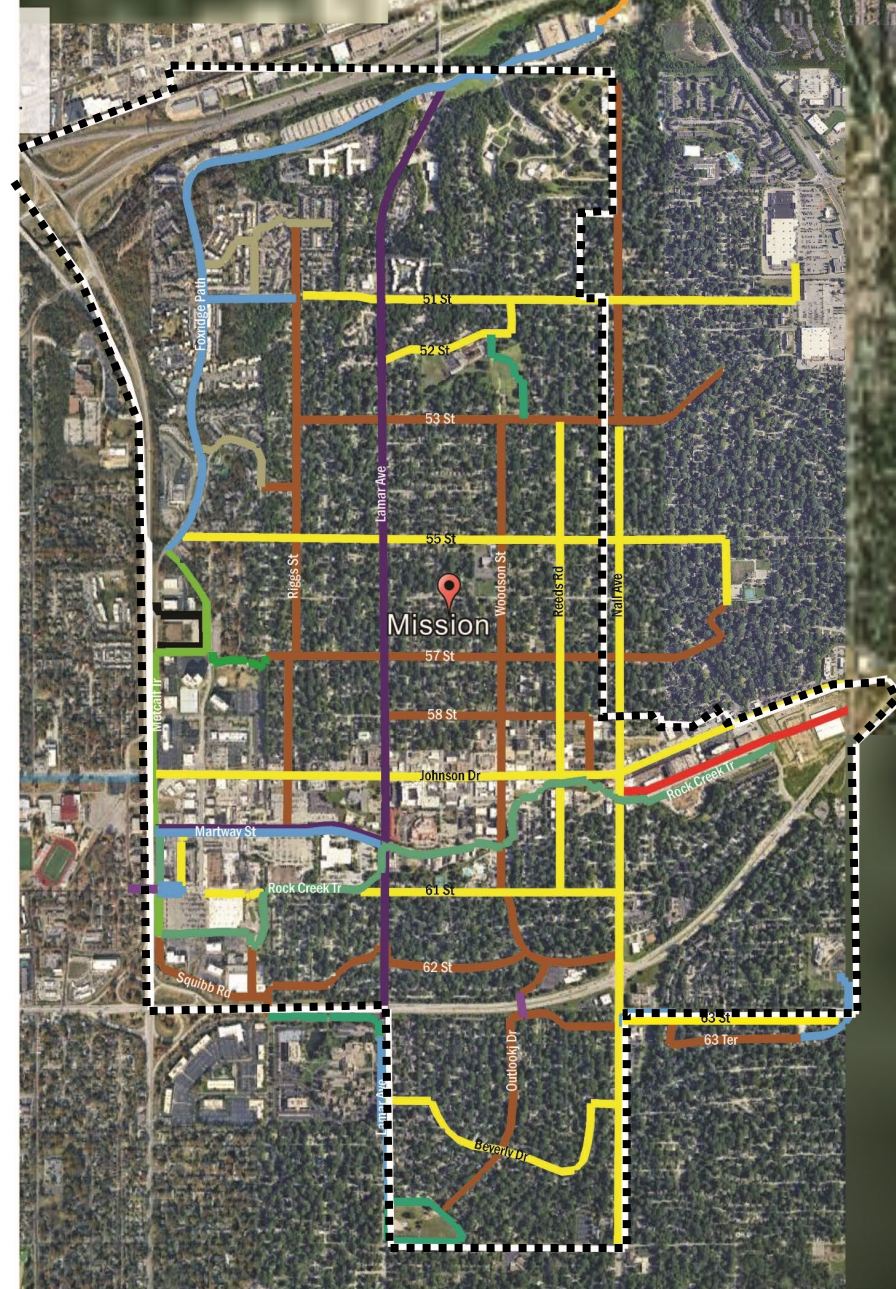
- Safe access to Rushton, Water Works Park, and Broadmoor Park
- Lamar Avenue facilities

- Praise for Trail and Johnson Dr
- Martway complete streets
- Commercial access
- Trail connections

- Connection to Mohawk Park
- Parkway Crossing

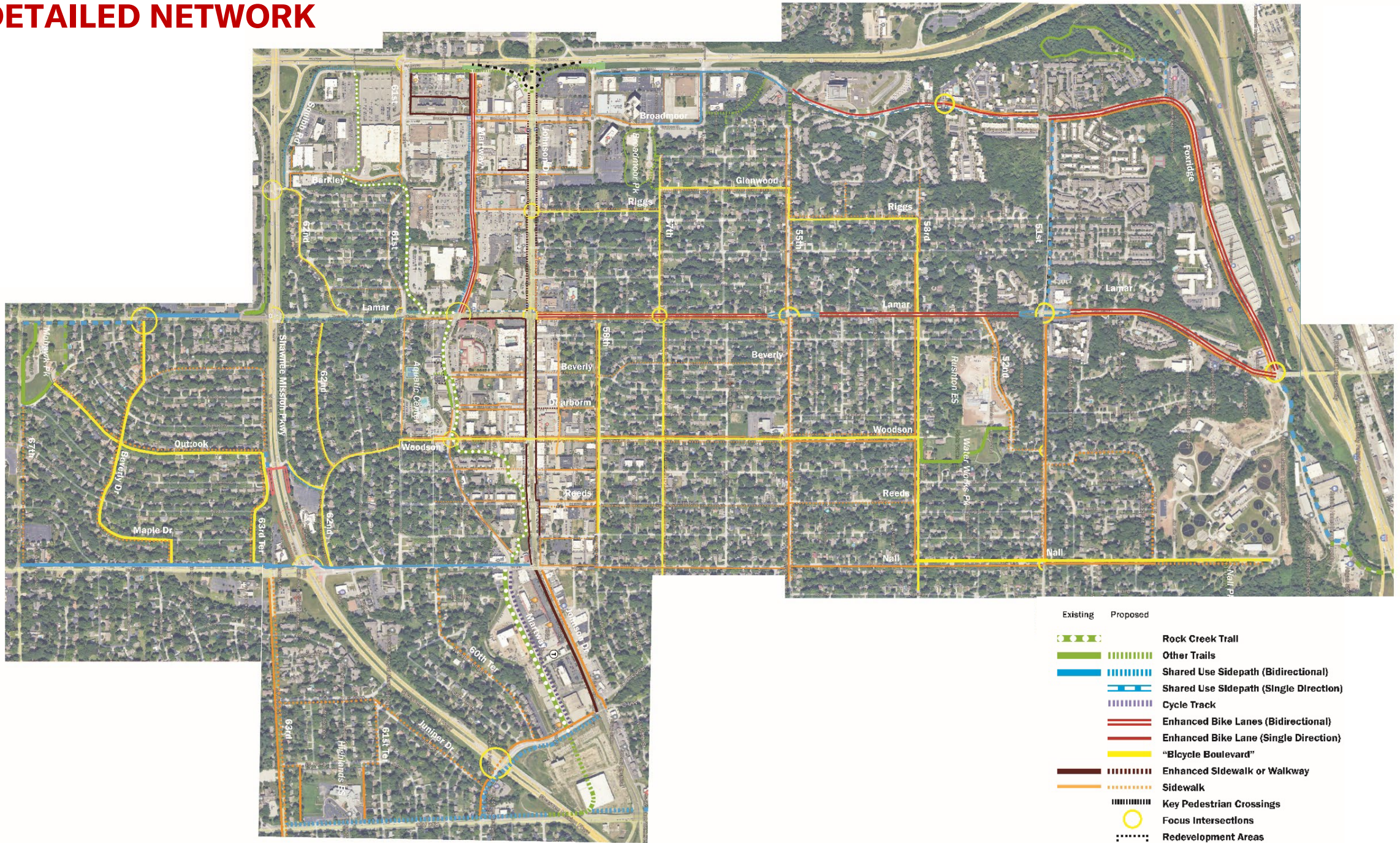


CURRENT STATE



CHARRETTE NETWORK

DETAILED NETWORK



FACILITY VOCABULARY

TYPES OF FACILITIES

ROCK CREEK TRAIL

- Premier destination trail
- City Center Connector
- Special enhancements

TRAILS

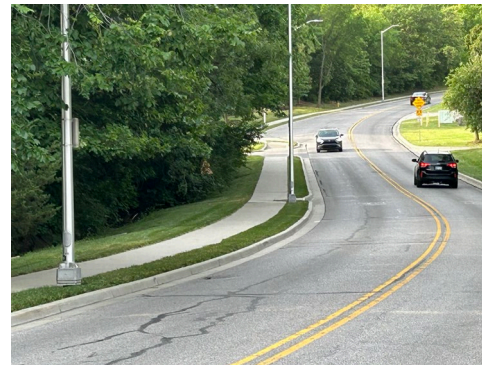
- Off-street facilities on exclusive right of way
- Two-way circulation
- 10' standard minimum width, 8' where constrained
- High visibility crosswalks at street crossings
- Additional treatment at major street intersections

SHARED USE SIDEPATHS (Bi-directional)

- Off-street facilities on street right of way
- Two-way circulation
- 10' standard minimum width, 8' where constrained
- High visibility crosswalks at street crossings
- Additional treatment at major street intersections

SHARED USE SIDEPATHS (Single direction)

- Sidewalk width (6' desirable min) permitting bicycles in a single direction
- Unrestricted pedestrians/one-way for bikes/micro-mobility
- Use in highly constrained situations
- High visibility crosswalks at street crossings
- Additional treatment at major street intersections



Existing	Proposed	
		Rock Creek Trail
		Other Trails
		Shared Use Sidepath (Bidirectional)
		Shared Use Sidepath (Single Direction)
		Cycle Track
		Enhanced Bike Lanes (Bidirectional)
		Enhanced Bike Lane (Single Direction)
		"Bicycle Boulevard"
		Enhanced Sidewalk or Walkway
		Sidewalk
		Key Pedestrian Crossings
		Focus Intersections
		Redevelopment Areas

FACILITY VOCABULARY

TYPES OF FACILITIES

CYCLE TRACK

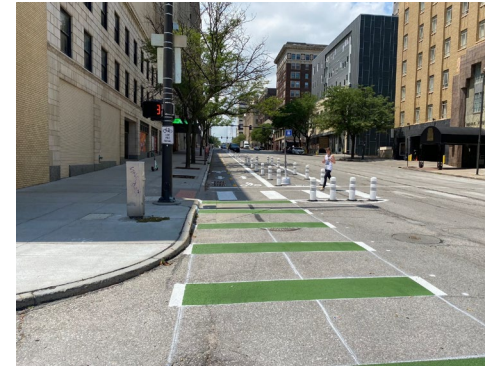
- In street channel below curb
- May be single or bi-directional
- Separated by buffers or raised barriers from motor vehicles
- Permits micro-mobility use, no pedestrians
- 10' minimum, 8' in very constrained locations
- High-visibility crossings at street intersections

ENHANCED BIKE LANES (Bi-directional)

- On-street facility, adjacent to curbs. May necessitate narrower travel lanes
- Advisable on streets > 3,000 vpd
- One-way directional with traffic on both sides of street
- 5' standard minimum width with no gutter pans, 6' with gutter pans
- High visibility crosswalks at street crossings
- Additional treatment at major street intersections, including transition to short off-street segments
- Green markings at key locations to enhance visibility

ENHANCED BIKE LANES (Single direction)

- Same as bi-directional, but on only one side of street
- Paired with another street or facility for opposing direction



Existing	Proposed	
		Rock Creek Trail
		Other Trails
		Shared Use Sidepath (Bidirectional)
		Shared Use Sidepath (Single Direction)
		Cycle Track
		Enhanced Bike Lanes (Bidirectional)
		Enhanced Bike Lane (Single Direction)
		"Bicycle Boulevard"
		Enhanced Sidewalk or Walkway
		Sidewalk
		Key Pedestrian Crossings
		Focus Intersections
		Redevelopment Areas

FACILITY VOCABULARY

TYPES OF FACILITIES

BICYCLE BOULEVARD

- Low volume streets < 3,000 vpd and slow speed limits
- Good connectivity and service to destinations
- Includes sidewalks (both sides on major links, one-side elsewhere)
- Distinctive signage and directional graphics
- May include traffic calming devices and stop preference for bicyclists
- High visibility and typically pedestrian protection at major street crossings

ENHANCED SIDEWALKS

- Extra width sidewalks but primarily pedestrian domain only
- Streetscape elements and amenities
- Crosswalks with special material treatment

SIDEWALKS

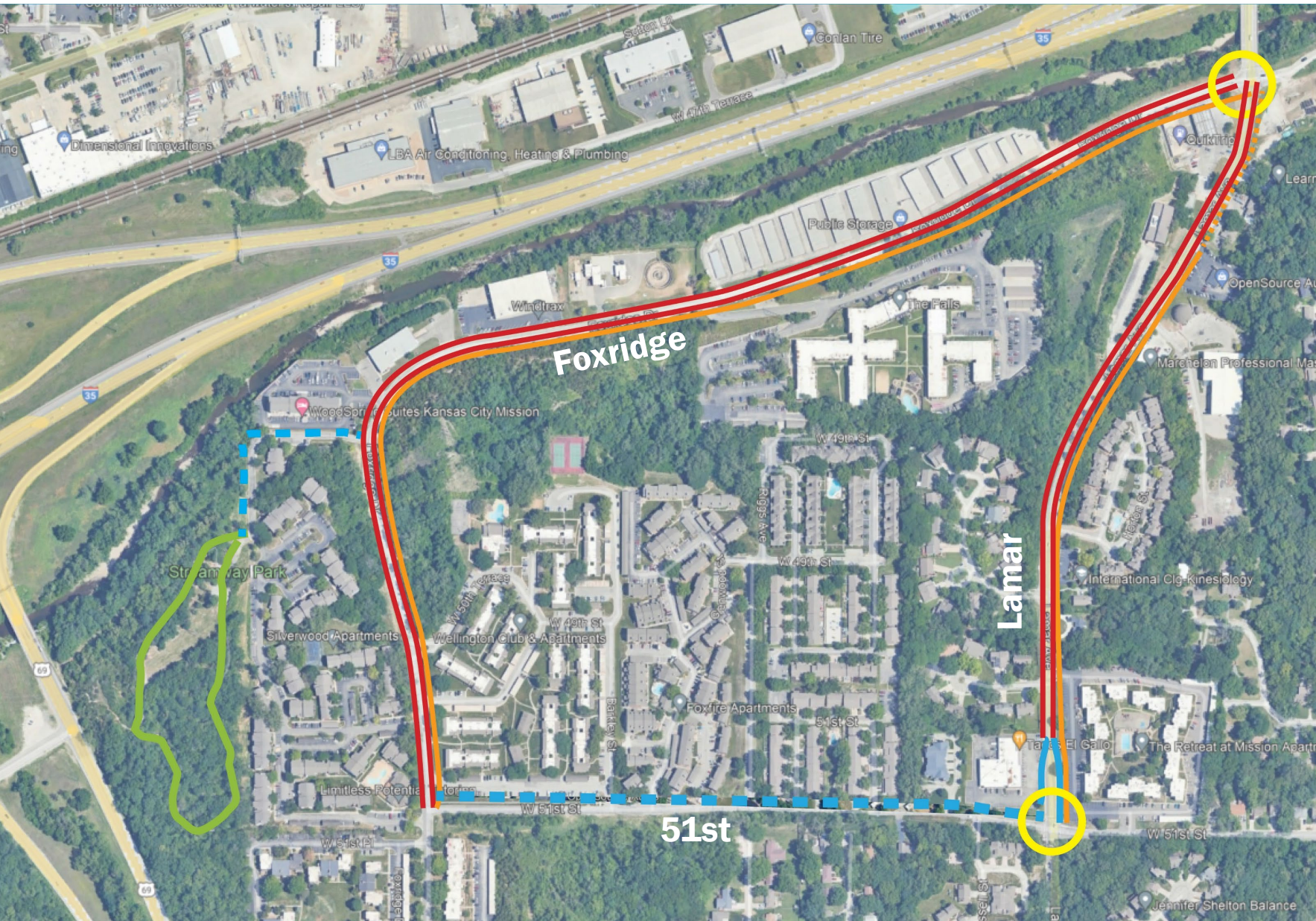
- 5' width, 6' desirable
- 4' minimum setback from back of curb, 6' desirable for new installations
- Reconstruction of existing sidewalks to comply with sidewalk setback
- Back of curb walks of adequate width may be acceptable adjacent to a bike lane
- High visibility crosswalks at major intersections
- General benefit financing for new walkways
- Alignments should curve or vary where possible



Existing	Proposed	
		Rock Creek Trail
		Other Trails
		Shared Use Sidepath (Bidirectional)
		Shared Use Sidepath (Single Direction)
		Cycle Track
		Enhanced Bike Lanes (Bidirectional)
		Enhanced Bike Lane (Single Direction)
		"Bicycle Boulevard"
		Enhanced Sidewalk or Walkway
		Sidewalk
		Key Pedestrian Crossings
		Focus Intersections
		Redevelopment Areas

SECTOR DETAILS

LAMAR WEST, 51ST NORTH



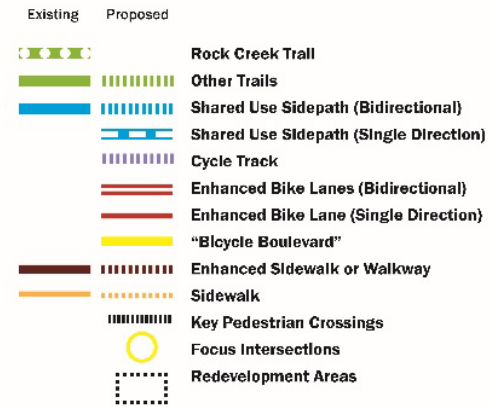
Existing	Proposed	
		Rock Creek Trail
		Other Trails
		Shared Use Sidepath (Bidirectional)
		Shared Use Sidepath (Single Direction)
		Cycle Track
		Enhanced Bike Lanes (Bidirectional)
		Enhanced Bike Lane (Single Direction)
		"Bicycle Boulevard"
		Enhanced Sidewalk or Walkway
		Sidewalk
		Key Pedestrian Crossings
		Focus Intersections
		Redevelopment Areas

FEATURES

- Enhanced bike lanes on Foxridge and Lamar
- Sidepath on 51st serving apartments
- Intersection modification with bike lane turnouts at 51st and Lamar

SECTOR DETAILS

LAMAR WEST, 51ST TO 55TH

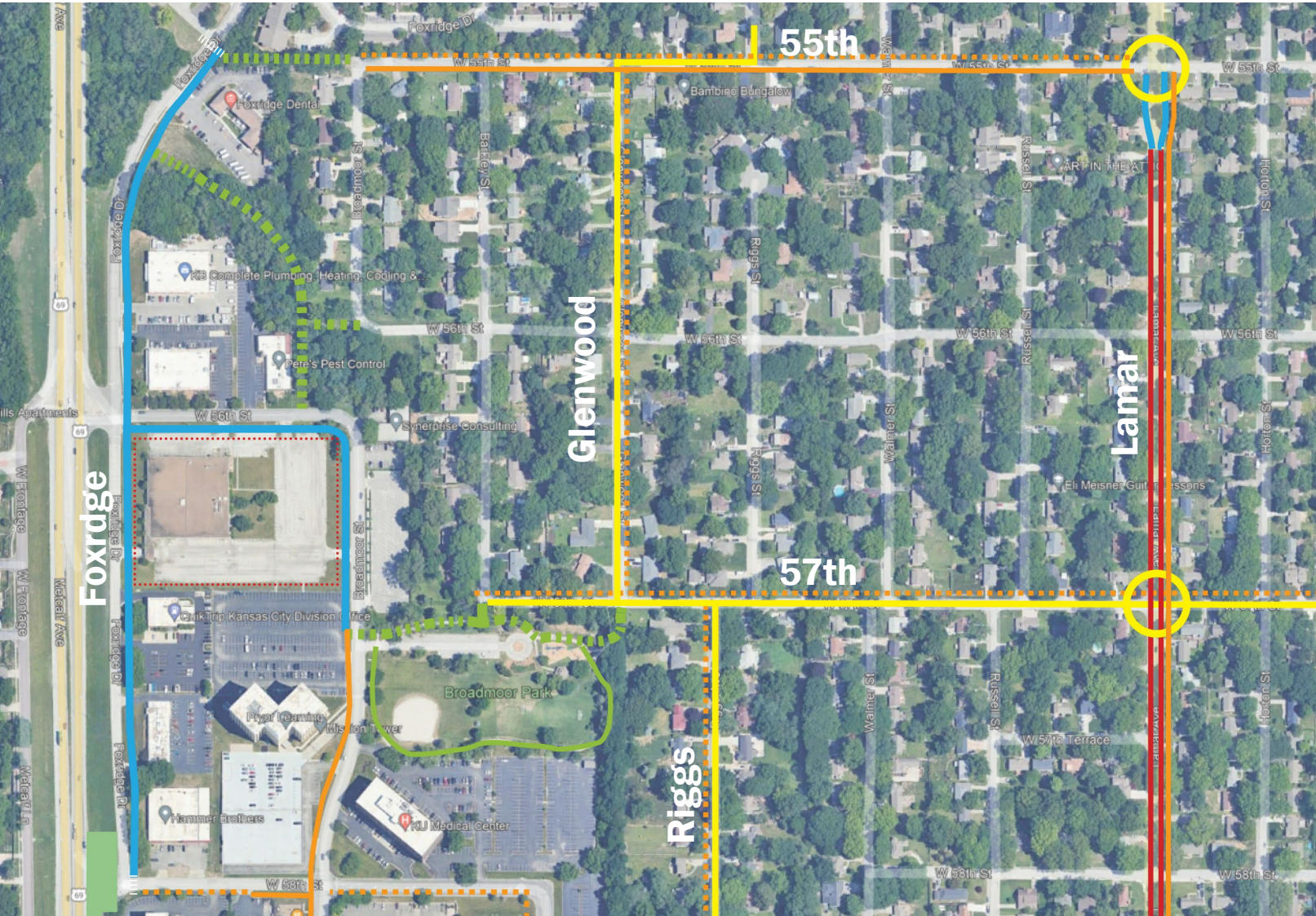


FEATURES

- Single direction sidepath (NB for bikes) on Foxridge widening sidewalk where possible
- SB bike lane on Foxridge
- Enhanced bike lanes on Lamar
- Intersection modification with bike lane turnouts at 55th and Lamar
- Bicycle boulevards on 53rd and Riggs, sidewalk connection to apartments
- Sidewalk on 55th, path link to Foxridge system

SECTOR DETAILS

LAMAR WEST, 55TH TO 57TH



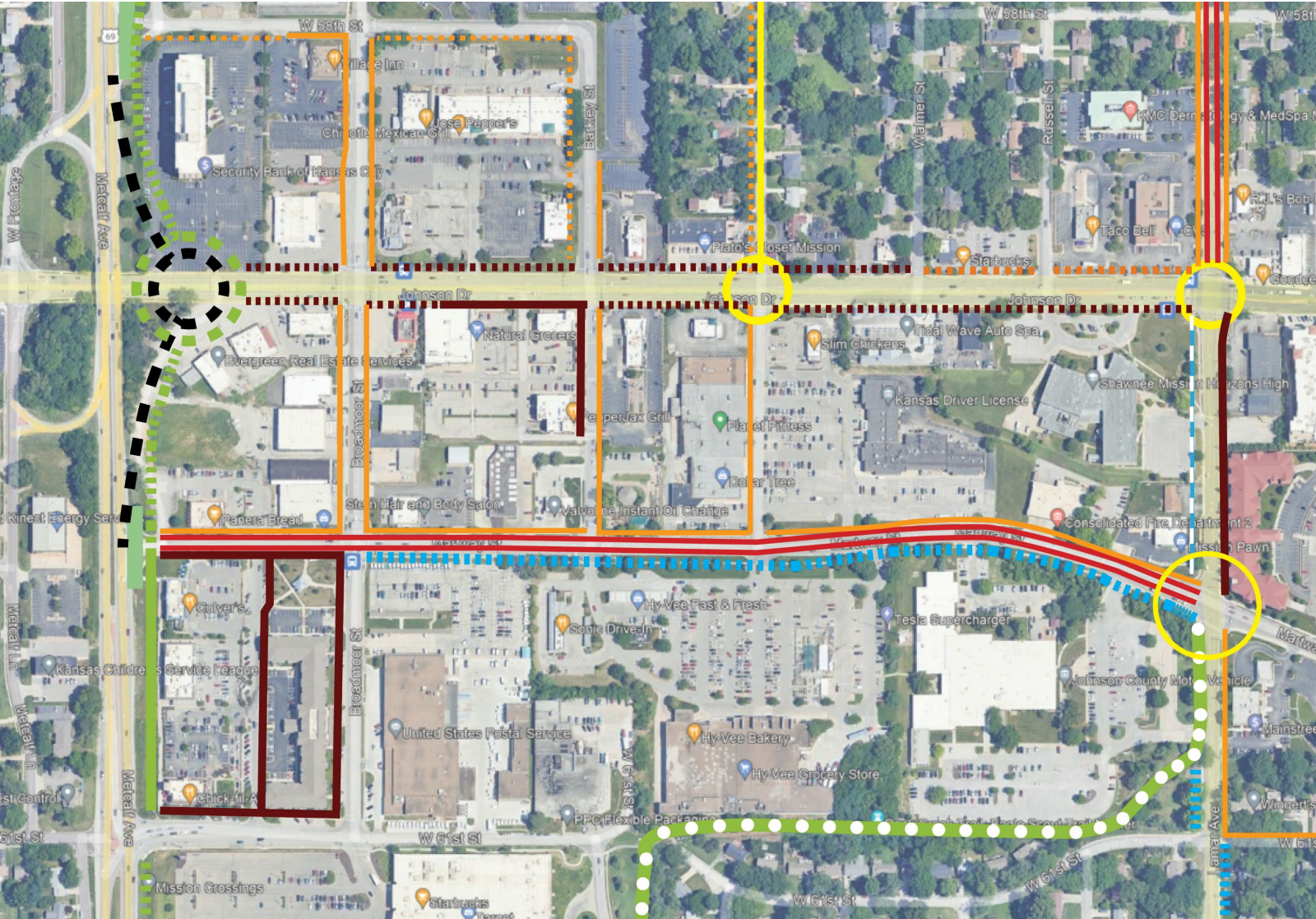
Existing	Proposed	
		Rock Creek Trail
		Other Trails
		Shared Use Sidepath (Bidirectional)
		Shared Use Sidepath (Single Direction)
		Cycle Track
		Enhanced Bike Lanes (Bidirectional)
		Enhanced Bike Lane (Single Direction)
		"Bicycle Boulevard"
		Enhanced Sidewalk or Walkway
		Sidewalk
		Key Pedestrian Crossings
		Focus Intersections
		Redevelopment Areas

FEATURES

- Sidepath on Foxridge by widening existing sidewalk
- Trail and sidepath connection to Broadmoor
- 57th Street crosstown bike boulevard, connection to Foxridge system through Broadmoor Park
- Enhanced crossing at 57th and Lamar
- Continuation of Riggs/Glenwood bicycle boulevard

SECTOR DETAILS

LAMAR WEST, 57TH TO 61ST



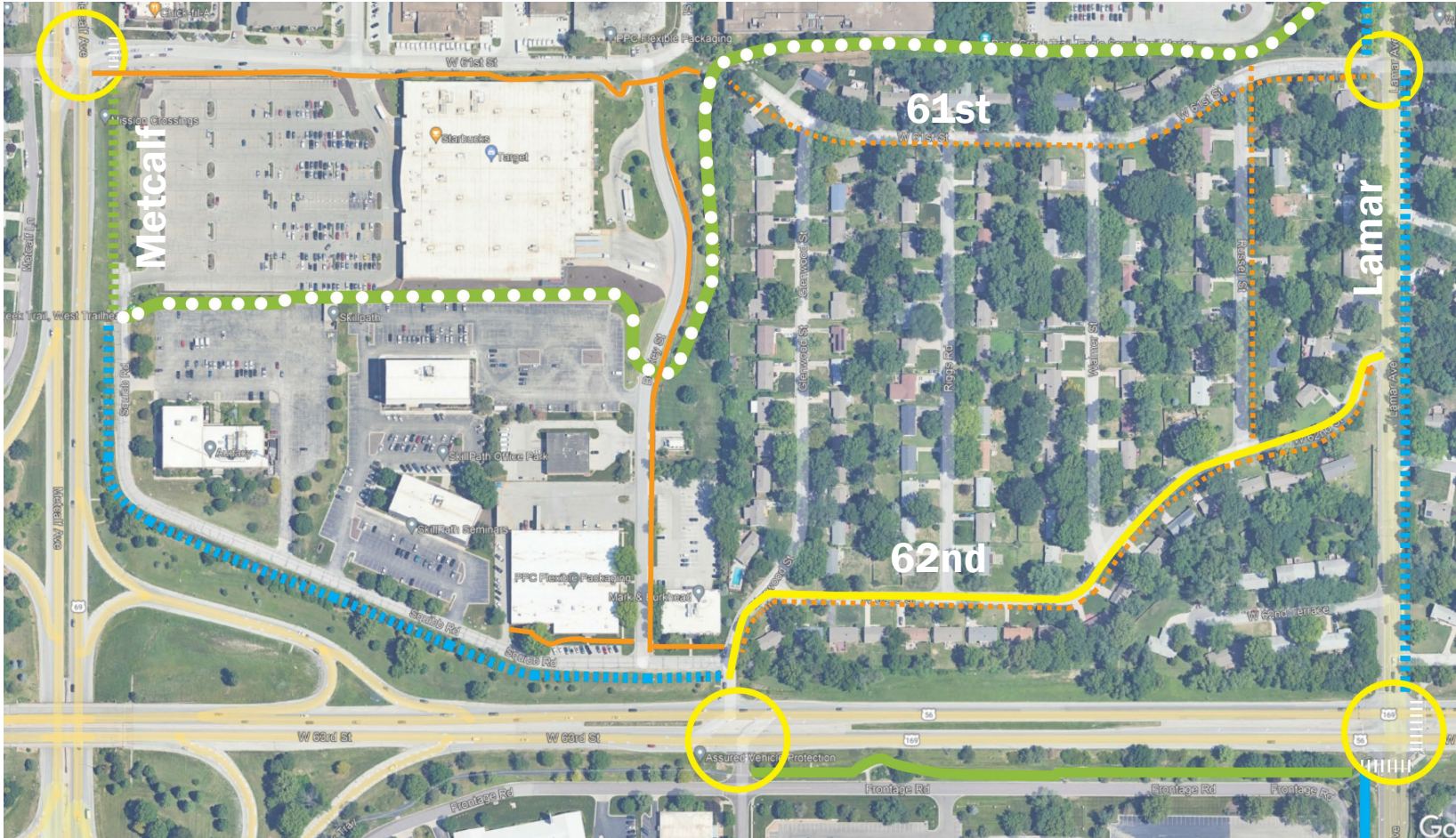
Existing	Proposed	
		Rock Creek Trail
		Other Trails
		Shared Use Sidepath (Bidirectional)
		Shared Use Sidepath (Single Direction)
		Cycle Track
		Enhanced Bike Lanes (Bidirectional)
		Enhanced Bike Lane (Single Direction)
		"Bicycle Boulevard"
		Enhanced Sidewalk or Walkway
		Sidewalk
		Key Pedestrian Crossings
		Focus Intersections
		Redevelopment Areas

FEATURES

- Metcalf Trail continues Foxridge system to RCT
- Enhanced sidewalks on Johnson Drive
- Continuation of bike lane enhancement on Lamar
- New sidepath and enhanced bike lanes on Martway
- Roundabout project at Johnson and Metcalf, closure of 58th and Martway accesses
- Single direction SB sidepath on Lamar to 61st, bike use on wide sidewalk NB permitted

SECTOR DETAILS

LAMAR WEST, 61ST TO SMP



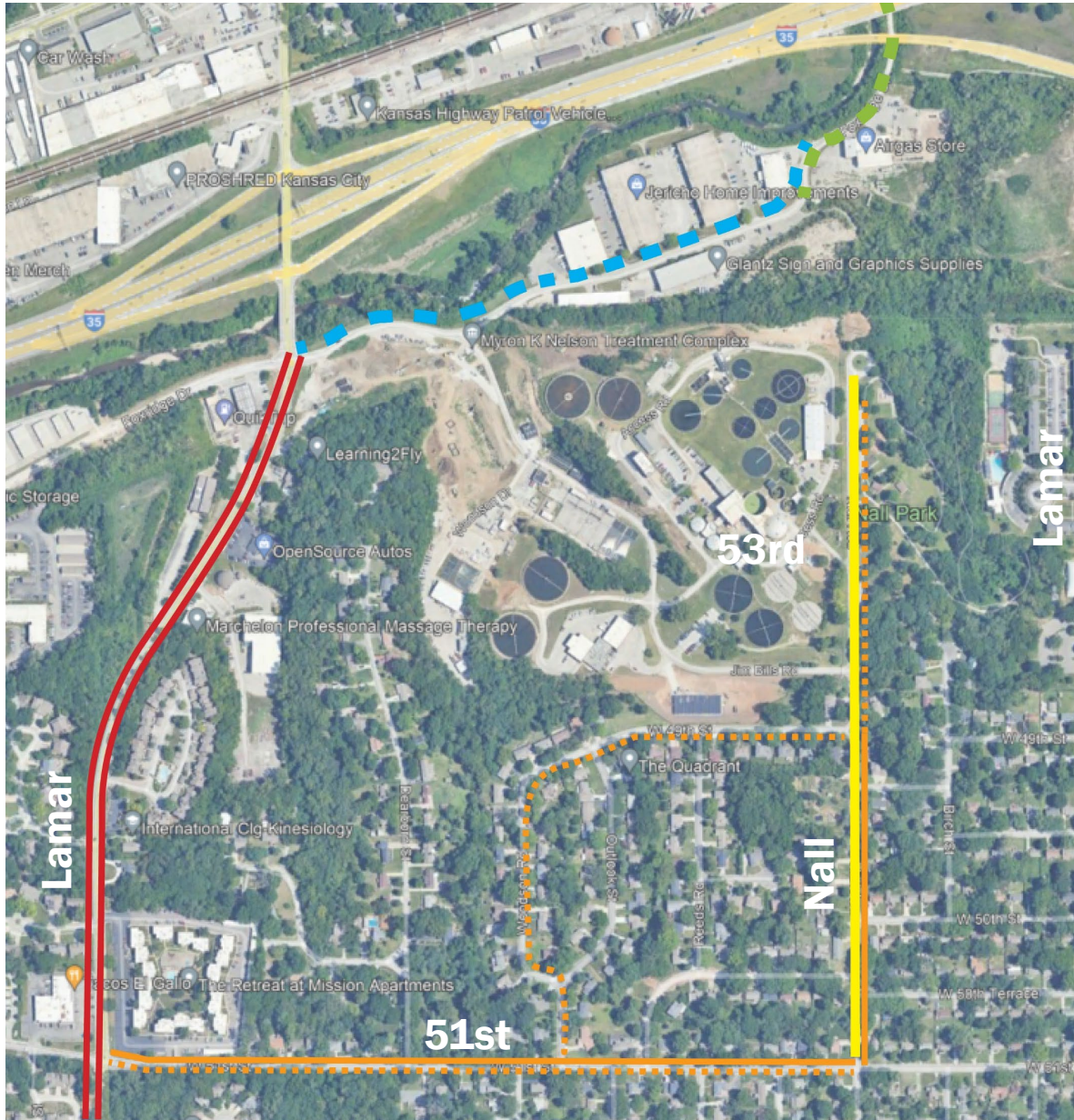
Existing	Proposed
	Rock Creek Trail
	Other Trails
	Shared Use Sidepath (Bidirectional)
	Shared Use Sidepath (Single Direction)
	Cycle Track
	Enhanced Bike Lanes (Bidirectional)
	Enhanced Bike Lane (Single Direction)
	"Bicycle Boulevard"
	Enhanced Sidewalk or Walkway
	Sidewalk
	Key Pedestrian Crossings
	Focus Intersections
	Redevelopment Areas

FEATURES

- Extension of Metcalfe Trail to RCT
- Squibb Rd sidepath
- New sidewalk on 61st
- Bicycle boulevard on 62nd
- Sidepath on Lamar east side
- Protected ped crossing at Glenwood using existing median
- Improved ped intersection at Lamar crossing

SECTOR DETAILS

LAMAR EAST, FOXRIDGE TO 51ST



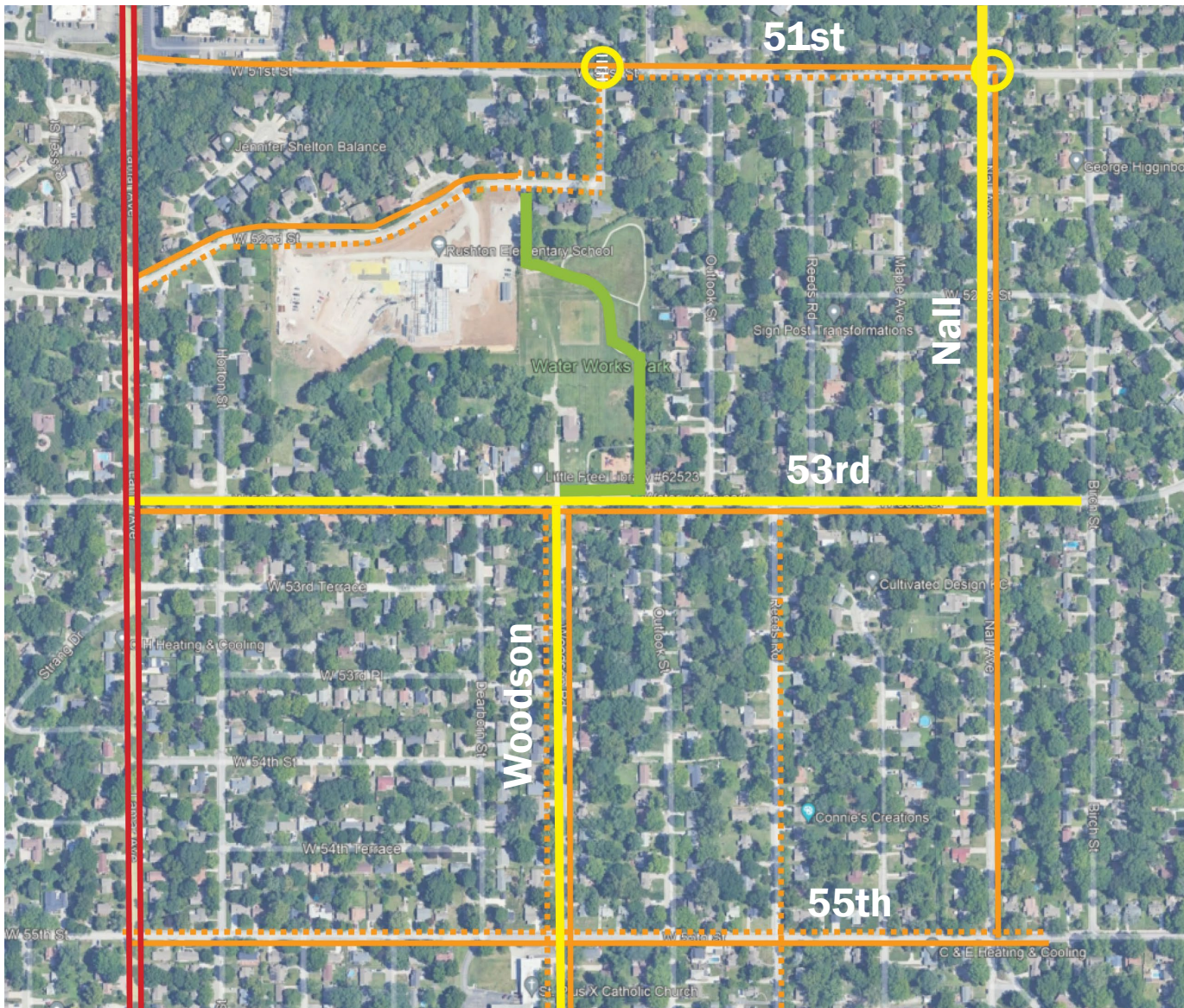
Existing	Proposed	
		Rock Creek Trail
		Other Trails
		Shared Use Sidepath (Bidirectional)
		Shared Use Sidepath (Single Direction)
		Cycle Track
		Enhanced Bike Lanes (Bidirectional)
		Enhanced Bike Lane (Single Direction)
		"Bicycle Boulevard"
		Enhanced Sidewalk or Walkway
		Sidewalk
		Key Pedestrian Crossings
		Focus Intersections
		Redevelopment Areas

FEATURES

- Foxridge sidepath and trail to Merriam Lane bikeway
- Two sided sidewalk on 51st with neighborhood connection
- Nall bicycle boulevard to Nall Park and 53rd

SECTOR DETAILS

LAMAR EAST, 51ST TO 55TH



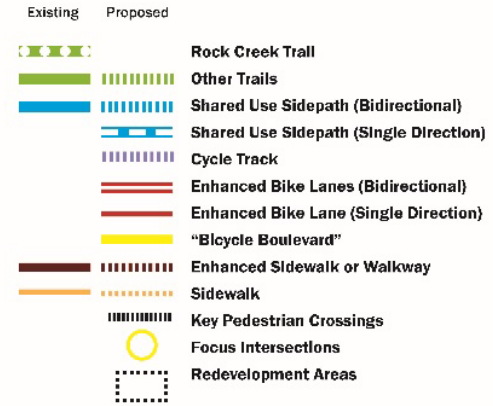
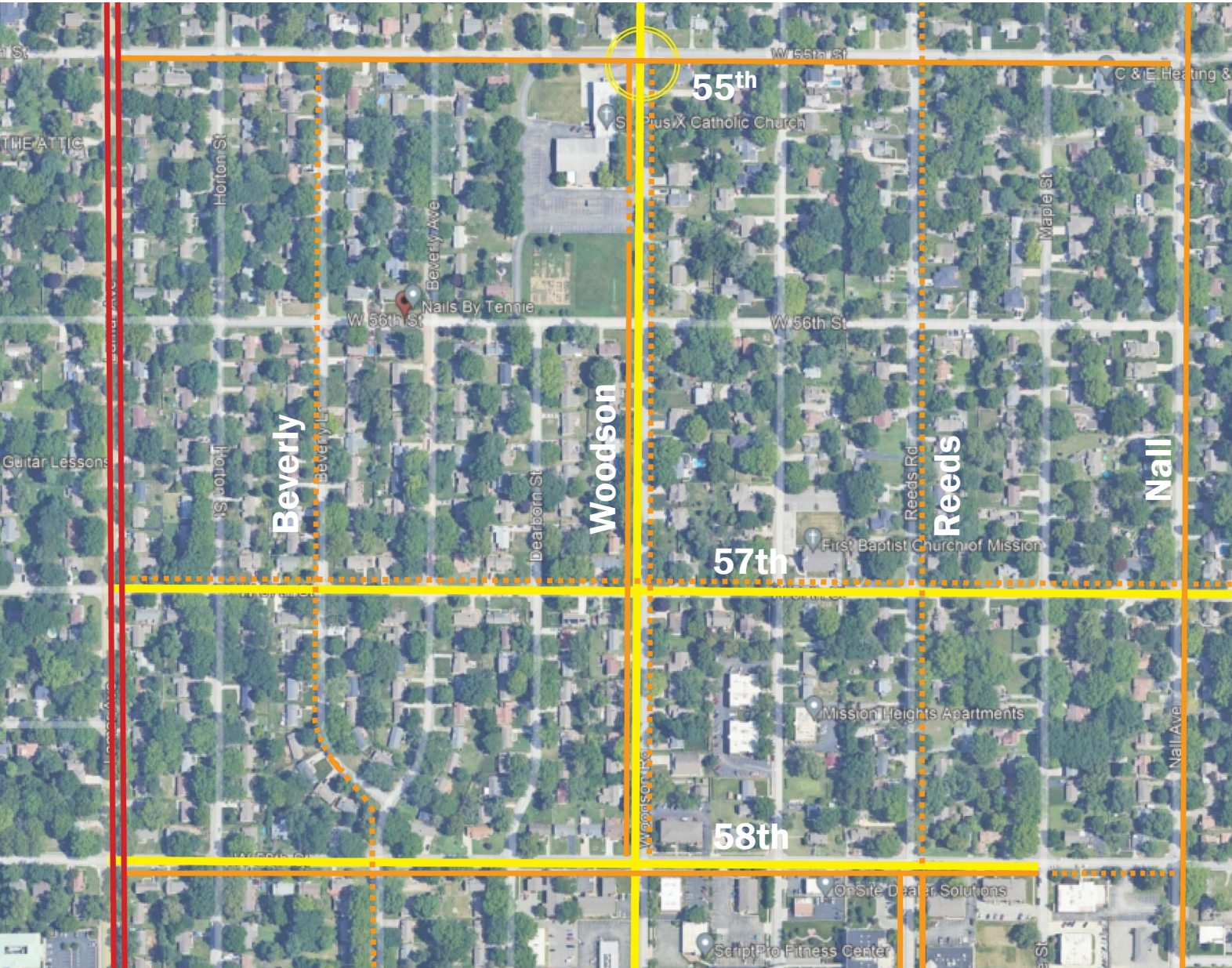
Existing	Proposed	
		Rock Creek Trail
		Other Trails
		Shared Use Sidepath (Bidirectional)
		Shared Use Sidepath (Single Direction)
		Cycle Track
		Enhanced Bike Lanes (Bidirectional)
		Enhanced Bike Lane (Single Direction)
		"Bicycle Boulevard"
		Enhanced Sidewalk or Walkway
		Sidewalk
		Key Pedestrian Crossings
		Focus Intersections
		Redevelopment Areas

FEATURES

- Complete sidewalk access to Rushton ES, with enhanced crossings
- Continuation of 53rd Street bicycle boulevard
- Establishment of Woodson Bicycle Boulevard, connecting north through Water Works Park – two-sided sidewalks
- Continuation of two-sided sidewalks on 55th

SECTOR DETAILS

LAMAR EAST, 55TH TO 58TH

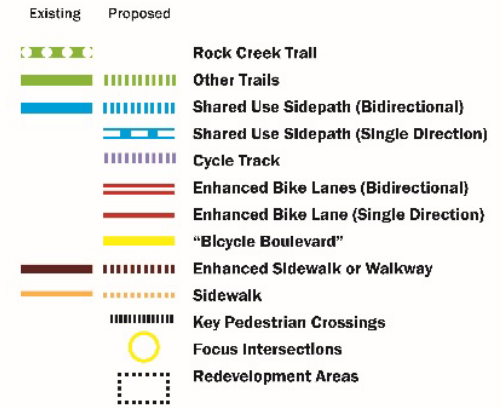
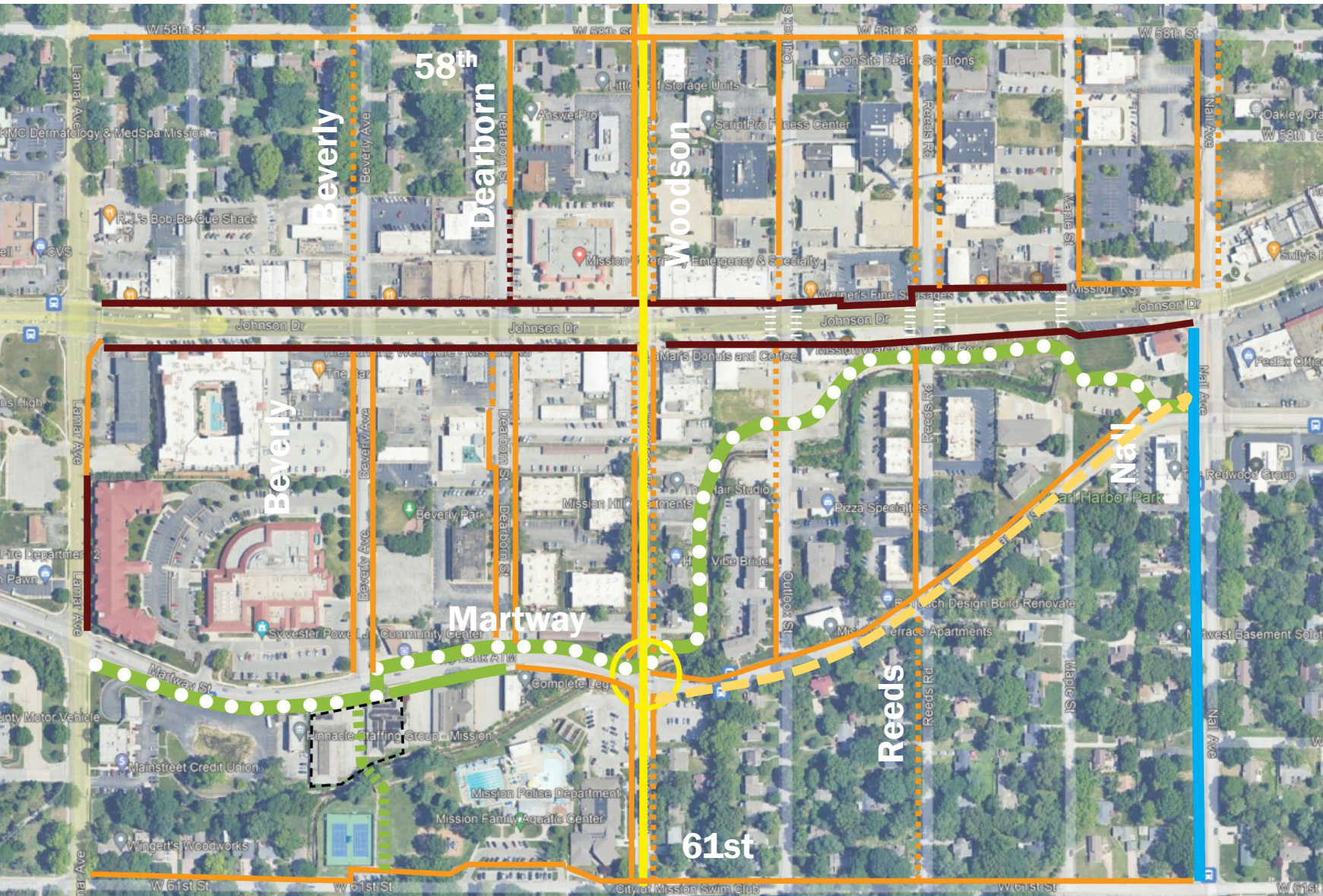


FEATURES

- Sidewalks on Beverly and Rees for better north-south ped access
- Continuation of Woodson bicycle boulevard
- Bicycle boulevard on 58th Street to serve central Johnson Drive district

SECTOR DETAILS

LAMAR EAST, 58TH TO 61ST

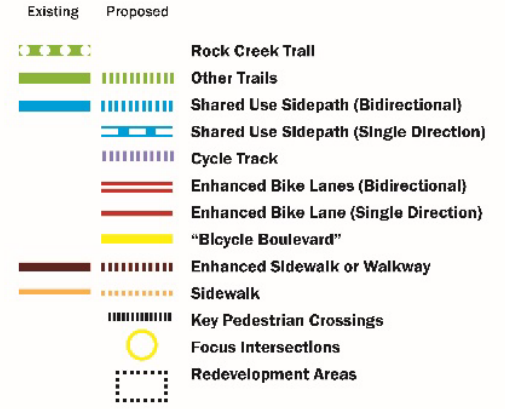
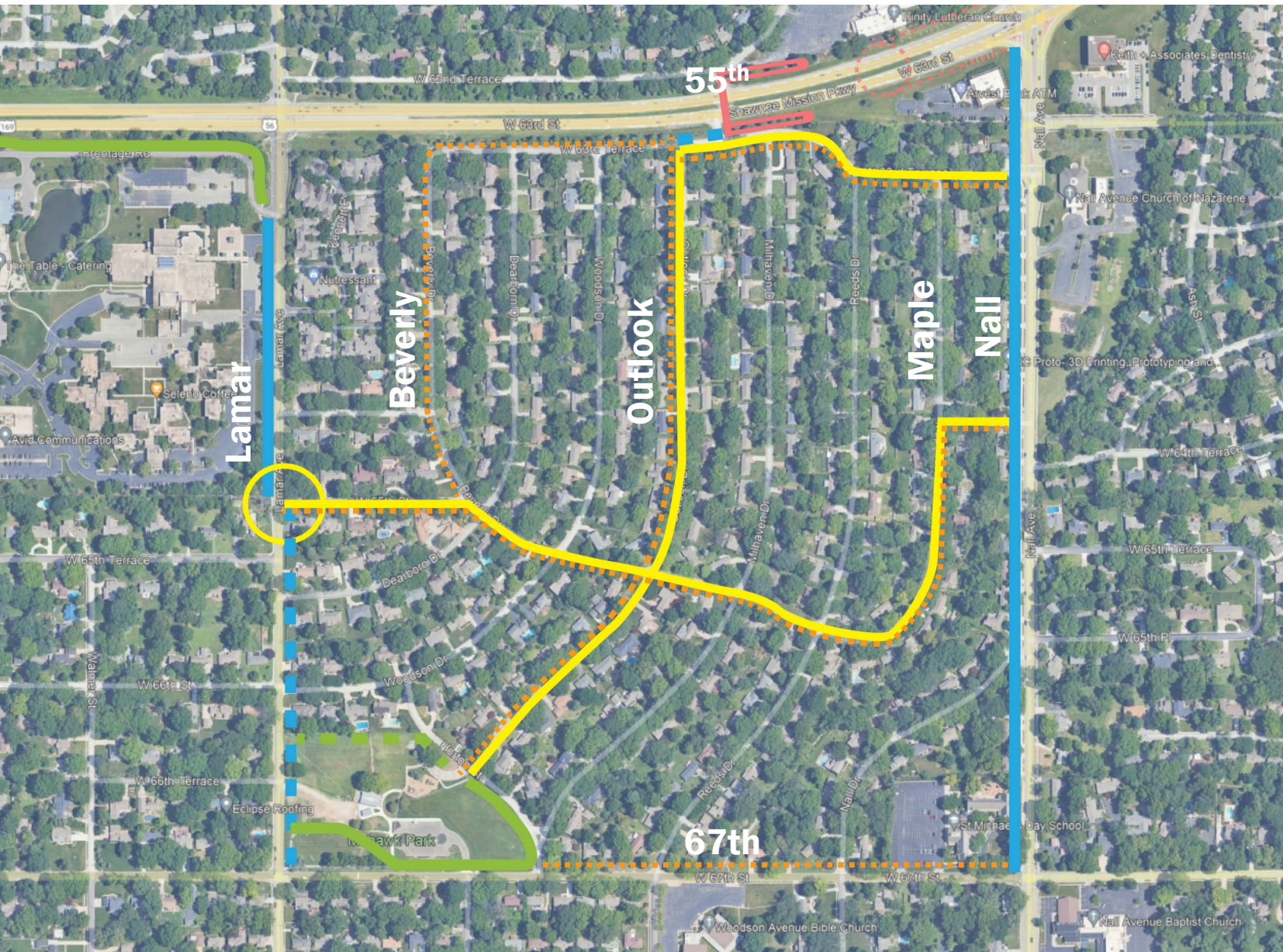


FEATURES

- Completion of sidewalks on business streets to Johnson Drive
- 58th St bicycle boulevard for parallel access
- Trail connection through redevelopment site to Aquatics Park from RCT
- Continuation of Woodson bicycle boulevard and major intersection crossing at Martway
- Consideration for special treatment of Martway between Woodson and Nall

SECTOR DETAILS

LAMAR EAST, 61ST TO 63RD TER



FEATURES

- South of Parkway bicycle boulevards and sidewalks
- Lamar sidepath continuation on Mission side

SECTOR DETAILS

NALL EAST, JOHNSON TO 63RD



FEATURES

- Martway cycle track between Nall and Roeland Drive
- Juniper/Hodges sidewalks and SR2S routes to Highlands ES
- Roe Avenue sidepath
- Improved Roeland Dr/SWP intersection
- Trail/cycle track connection through Gateway redevelopment site
- 63rd St sidewalk

NEXT MEETING

POLICY ISSUES

- **Goals: BFC status, marketing, measurable progress – techniques used**
- **Inter-departmental collaboration**
- **Active Trans Advisory Committee – role, relationship with city departments, project review**
- **Priority criteria**
- **Funding options: capital and maintenance**
- **New modes: e-bikes (classifications and rights), scooters**
- **Marketing**



