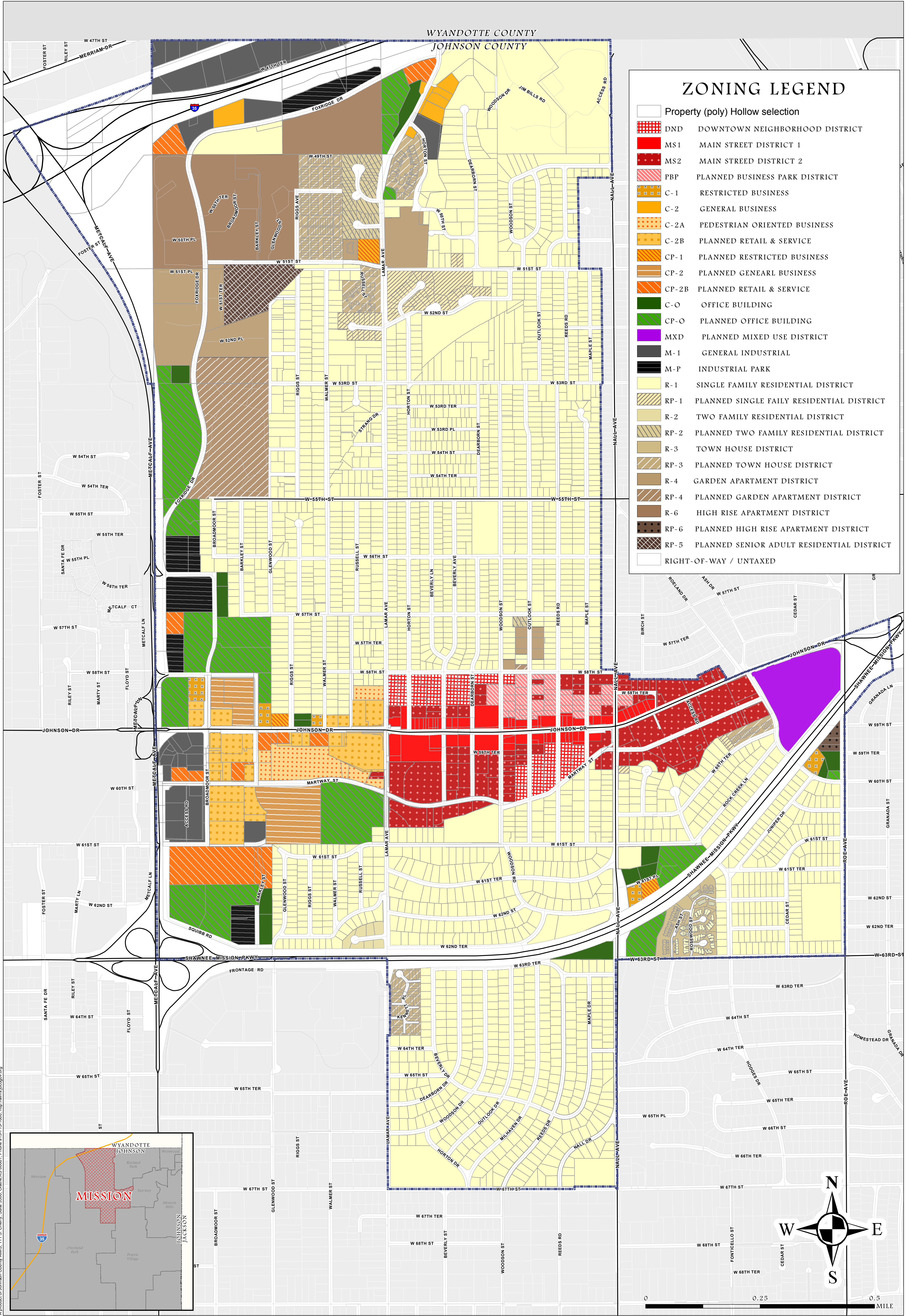
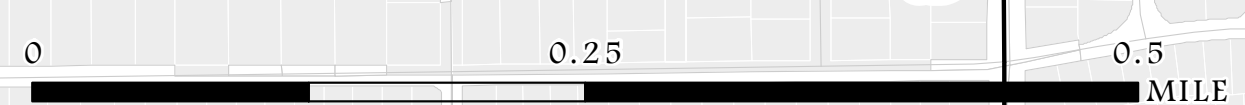
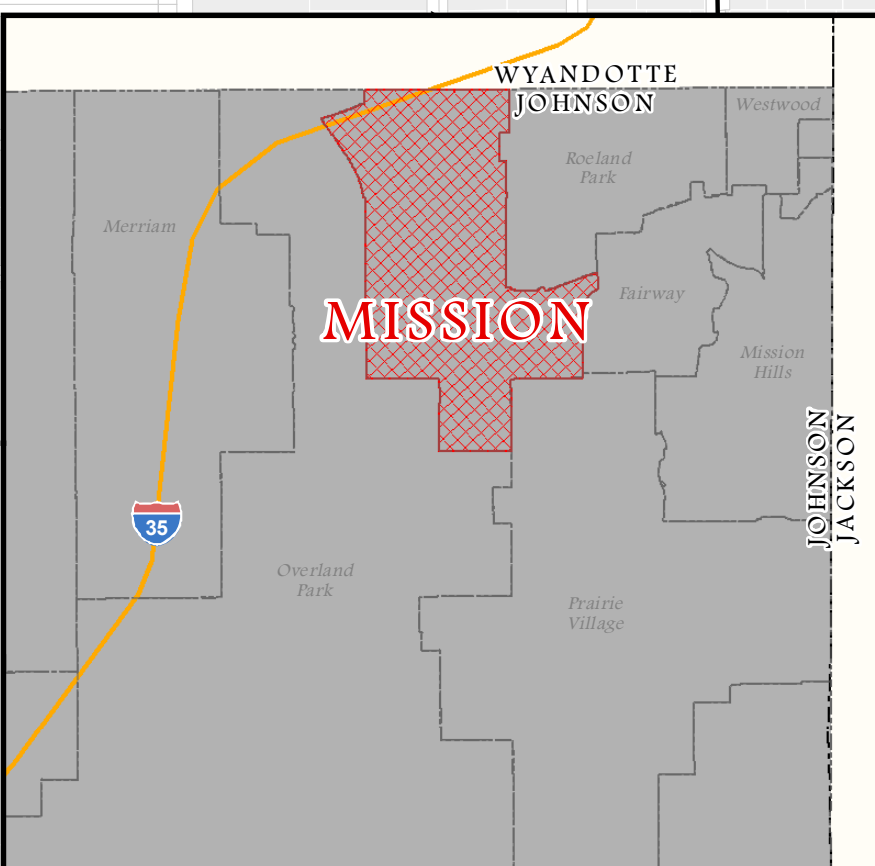


# MISSION, KS



## ZONING LEGEND

	Property (poly) Hollow selection
	DND DOWNTOWN NEIGHBORHOOD DISTRICT
	MS1 MAIN STREET DISTRICT 1
	MS2 MAIN STREET DISTRICT 2
	PBP PLANNED BUSINESS PARK DISTRICT
	C-1 RESTRICTED BUSINESS
	C-2 GENERAL BUSINESS
	C-2A PEDESTRIAN ORIENTED BUSINESS
	C-2B PLANNED RETAIL & SERVICE
	CP-1 PLANNED RESTRICTED BUSINESS
	CP-2 PLANNED GENERAL BUSINESS
	CP-2B PLANNED RETAIL & SERVICE
	C-O OFFICE BUILDING
	CP-O PLANNED OFFICE BUILDING
	MXD PLANNED MIXED USE DISTRICT
	M-1 GENERAL INDUSTRIAL
	M-P INDUSTRIAL PARK
	R-1 SINGLE FAMILY RESIDENTIAL DISTRICT
	RP-1 PLANNED SINGLE FAMILY RESIDENTIAL DISTRICT
	R-2 TWO FAMILY RESIDENTIAL DISTRICT
	RP-2 PLANNED TWO FAMILY RESIDENTIAL DISTRICT
	R-3 TOWN HOUSE DISTRICT
	RP-3 PLANNED TOWN HOUSE DISTRICT
	R-4 GARDEN APARTMENT DISTRICT
	RP-4 PLANNED GARDEN APARTMENT DISTRICT
	R-6 HIGH RISE APARTMENT DISTRICT
	RP-6 PLANNED HIGH RISE APARTMENT DISTRICT
	RP-5 PLANNED SENIOR ADULT RESIDENTIAL DISTRICT
	RIGHT-OF-WAY / UNTAXED



A product of Johnson County GIS, 111 S. Cherry, Suite 500C, Olathe, KS 66061. Phone 913-715-1000. <http://gis.jcogov.org>  
 Date: 9/6/2017