

Mission, Kansas
Stormwater Management Plan
January 1, 2021 through January 31, 2024



Federal Permit No. KSR410021

Submitted in Compliance with Kansas Permit No. M-KS45-SU01

Date: February 23, 2021

Section 1	Introduction	2
Section 2	Six Minimum Control Measures	3
2.1	Minimum Control Measure 1 (MCM 1) - Public Education and Outreach	3
2.2	Minimum Control Measure 2 (MCM 2) - Public Involvement and Participation ...	5
2.3	Minimum Control Measure 3 (MCM 3) - Illicit Discharge Detection and Elimination.....	6
2.4	Minimum Control Measure 4 (MCM 4) - Construction Site Stormwater Runoff Control	8
2.5	Minimum Control Measure 5 (MCM 5) - Post-Construction Stormwater Management in New Development and Redevelopment.....	10
2.6	Minimum Control Measure 6 (MCM 6) - Pollution Prevention/Good Housekeeping for Municipal Operations	12
Section 3	Total Maximum Daily Load (TMDL) Regulated Pollutants.....	13
Section 4	Water Quality Monitoring for TMDL Assessments	13
Section 5	Permit Compliance Schedule Activities and Schedules	13
Section 6	Modifications to the Stormwater Management Plan.....	13

Appendices

Appendix A - Map of Permitted Area

Appendix B - Tables 1-6 Planned BMPs for Permit Compliance

SECTION 1: INTRODUCTION

This document is a Stormwater Management Plan (SMP, or the “Plan”) created to help reduce the discharge of pollutants in stormwater runoff from the Municipal Separate Storm Sewer System (MS4) within regulated areas of Mission, Kansas (Map of permitted area included in Appendix A). It outlines stormwater program activities, monitoring requirements, reporting requirements, and responsible parties for implementing this work.

This plan was prepared in compliance with Kansas Permit Number M-KS45-SU01 (hereinafter “the permit”) issued to the City by the Kansas Department of Health and Environment (KDHE) to fulfill requirements of the Clean Water Act.

Permit Effective Date: October 1, 2019

Permit Expiration Date: September 30, 2024

The SMP is designed to:

1. Reduce the discharge of pollutants from the MS4 to the Maximum Extent Practicable (MEP).
2. Implement the Six (6) Minimum Control Measures as listed in Part I Section C of the permit:
 - a. The Six Minimum Control Measures are:
 - i. Public Education and Outreach,
 - ii. Public Participation and Involvement,
 - iii. Illicit Discharge Detection and Elimination,
 - iv. Construction Site Stormwater Runoff Control,
 - v. Post-Construction Stormwater Management in New Development and Redevelopment Projects, and,
 - vi. Pollution Prevention/Good Housekeeping for Municipal Operations.
3. Implement Best Management Practices (BMPs) to reduce to the MEP the discharge of the Total Maximum Daily Load (TMDL) regulated pollutants from the MS4 to the watershed of the impaired stream and/or lake as listed in the Permit.
4. And, satisfy the requirements of the permit, the Clean Water Act, and the Kansas surface water quality statutes and regulations.

Implementation of BMPs consistent with the provisions of the SMP document and this permit constitutes compliance with the standard of reducing pollutants to the Maximum Extent Practicable.

The City of Mission Public Works department (Celia Duran, Public Works Director) will have overall responsibility for coordination of activities outlined in this Plan, reporting, and submitting all documents (Stormwater Management Plan (and updates) and Annual Report) to KDHE.

SECTION 2: SIX MINIMUM CONTROL MEASURES

This section describes the six minimum water quality protection control measures that are required by all MS4 permits. They include the following:

1. Public Education and Outreach
2. Public Involvement and Participation
3. Illicit Discharge Detection and Elimination
4. Construction Site Stormwater Runoff Control
5. Post-Construction Stormwater Management in New Development and Redevelopment
6. Pollution Prevention/Good Housekeeping for Municipal Operations

2.1 MINIMUM CONTROL MEASURE 1 (MCM 1) - PUBLIC EDUCATION AND OUTREACH

Description

MCM 1 consists of implementing a public education program to inform individuals, businesses, and organizations about the impacts of stormwater discharges on surface water quality and how they can help reduce pollutants in stormwater runoff. This may include distribution of educational materials to the community and/or conducting outreach activities.

Benefit

An informed public increases awareness of water quality issues in both residents and businesses, creates opportunities for the public to take direct action to improve the health and sustainability of their community, and builds support for program goals making initiatives more effective.

Compliance

Compliance with the public education and outreach minimum control measure requires implementation of BMPs in Part I., Section C.1 of the Permit for a minimum of 4 points total on an annual basis for each calendar year 2021 and 2022. The minimum point total requirement increases to 7 points beginning in year 2023.

A table containing the BMP summary, the measurable goal, the implementation schedule, and points per activity is included in Appendix B: Table 1.

A short description of each planned BMP is included in the table below.

Table 1. Planned BMPs to meet MCM 1 requirements.

BMP ID	BMP Summary	Points per year			
		2021	2022	2023	2024
P Ed & 0 - 01	Maintain a stormwater webpage for the permittee.	3	2	2	2
P Ed & 0 - 02	Distribute educational materials (either flyers, brochures, catalog mailings, handouts, or e-mails) addressing various pertinent stormwater public education topics.	2	2	2	2
P Ed & 0 - 05	Post the municipality's MS4 permit and SMP document on either the stormwater web page or the municipal webpage.	1	1	1	1
P Ed & 0 - 06	Provide either a stormwater telephone hotline or web based or text message method for public reporting of illicit discharges.	2	2	2	2
P Ed & 0 - 08	Provide stormwater education for students at a school campus within K-12 (those grades present at the campus) within the permittee's jurisdiction or within 30 miles from this permit area. Alternately, funding stormwater BMP installations and/or field trips at the school campus will qualify.	3	3	3	3
<i>Total points per year</i>		<i>11</i>	<i>10</i>	<i>10</i>	<i>10</i>

2.2 MINIMUM CONTROL MEASURE 2 (MCM 2) - PUBLIC INVOLVEMENT AND PARTICIPATION

Description

This minimum control consists of creating opportunities for individuals and organizations to provide public comment and recommendations regarding BMPs and measurable goals and participate in the development and implementation of BMPs to reduce the contamination of stormwater. This program must also comply with state and local public notice requirements.

Benefit

The goal of the stormwater management plan is to improve water quality in local lakes and rivers, which provides benefits to the entire community. As such, the community deserves to have an opportunity to voice opinions on the content of the plan. Further, input into decisions builds support for and ownership in outcomes. MCM 2 also provides opportunity to the community to participate in activities, such as park or stream bank clean-up events, that help to remove pollutants from the MS4.

Compliance

Compliance with the public involvement and participation minimum control measure requires implementation of BMPs in Part I., Section C.2 of the Permit for a minimum of 3 points total on an annual basis for each calendar year 2021 and 2022. The minimum point total requirement increases to 6 points beginning in year 2023.

A table containing the BMP summary, the measurable goal, the implementation schedule, and points per activity is included in Appendix B: Table 2.

A short description of each planned BMP is included in the table below.

Table 2. Planned BMPs to meet MCM 2 requirements

BMP ID	BMP Summary	Points per year			
		2021	2022	2023	2024
P I/P - 03	Hold park or stream bank clean-up events for public volunteers to aid municipal staff in removing trash, debris, or pollutant sources from the selected clean-up area.	3	3	3	3
P I/P - 05	Provide at least two events for residents to engage in cleanup activities and improve water quality in the municipality.			3	3
P I/P - 06	Establish a program to encourage residents to install stormwater treatment best management practices on their property.	2	2	2	2
	<i>Total points per year</i>	5	5	8	8

2.3 MINIMUM CONTROL MEASURE 3 (MCM 3) - ILLICIT DISCHARGE DETECTION AND ELIMINATION

Description

This minimum control consists of developing, implementing, and enforcing a program to detect and eliminate illicit wastewater discharges or other non-stormwater discharges into the storm sewer system. KDHE requires this program to include, at a minimum:

- Developing a storm sewer system map of the permitted MS4 showing the location of all outfalls, either pipes or open channel drainage, and showing the names and locations of all streams or lakes that receive discharges from those outfalls.
- Enacting and enforcing an ordinance or resolutions to prohibit non-stormwater discharges into the storm sewer system. The City of Mission passed pollution prevention regulations (Ordinance No. 1201, Municipal Code Article XVI Stormwater Pollution Prevention) on May 10, 2006 to regulate unlawful discharges into streams and the storm drain system.
- Informing public employees, businesses, and the general public of hazards associated with illegal discharges and improper disposal of waste.
- Developing and implementing a plan to detect and address prohibited non-stormwater discharges.

Benefit

Direct discharges of waste streams can present significant localized impacts to both public health and the environment. Developing legal, technical, and educational means to eliminate illicit discharges provides direct benefits to water quality, the environment, and public health.

Compliance

Compliance with the illicit discharge detection and elimination minimum control measure requires implementation of BMPs in Part I., Section C.3 of the Permit for a minimum of 5 points total on an annual basis for each calendar year 2021 and 2022. The minimum point total requirement increases to 7 points beginning in year 2023.

A table containing the BMP summary, the measurable goal, the implementation schedule, and points per activity is included in Appendix B: Table 3.

A short description of each planned BMP is included in the table below.

Table 3. Planned BMPs to meet MCM 3 requirements

BMP ID	BMP Summary	Points per year			
		2021	2022	2023	2024
ID D & E - 03	Develop a spill response plan and, if appropriate, coordinate emergency response with other agencies or organizations.	3	2	2	2
ID D & E - 04	Implement a program to evaluate MS4 outfalls to identify illicit discharges. Inspect at least 5% of the known MS4 outfalls during a calendar year and evaluate the ones which have dry weather discharges. Evaluate the water quality of the dry weather discharges to recognize non- stormwater contributions and trace the source of any illicit discharge.	1	1	1	1
ID D & E - 07	Implement a Household Hazardous Waste Collection Program (HHWCP) or document others have implemented such a program to provide such service to all property owners or residents located within the permit area.	3	3	3	3
ID D & E - 10	Inspect 5% of the MS4 system stormwater inlets and/or outfalls within the permit area all conducted within a 12-month period to aid in identifying illicit discharges. If in a 12-month period 15% of the MS4 system inlets and/or outfalls are inspected a higher point value may be claimed in the year the required percentage of inspection are completed	3*	3*	3*	3*
<i>Total points per year</i>		<i>10</i>	<i>9</i>	<i>9</i>	<i>9</i>

*Note: 3 points may be claimed for inspection of 2% of the MS4 system in the year the required percentage of inlets and/or outfalls are finally inspected. Alternatively, if 15% of the MS4 system is inspected 5 points may be claimed.

2.4 MINIMUM CONTROL MEASURE 4 (MCM 4) - CONSTRUCTION SITE STORMWATER RUNOFF CONTROL

Description

This minimum control includes developing, implementing, and enforcing a program to reduce pollutants in any stormwater runoff to the MS4 for construction sites disturbing one acre or more, including areas that are less than one acre but are part of a larger common plan for development that disturbs one or more acre. KDHE requires this program to include:

- Where permittees have the authority to do so, ordinances or resolutions shall be enacted to require erosion and sediment controls, as well as sanctions to ensure compliance. The City of Mission passed erosion and sediment control regulations (Ordinance No. 1181, Municipal Code Article XVII Erosion and Sediment Control Regulations) on November 9, 2005 to regulate runoff pollution from active construction sites disturbing more than one acre.
- Requirements for construction site owners or operators to implement erosion and sediment control BMPs.
- Requirements for construction site owners or operators to control waste at construction sites that are likely to cause adverse impacts to water quality.
- Procedures for site plan review which incorporate consideration of potential water quality impacts.
- Procedures for receipt and consideration of information submitted by the public.
- Procedures for site inspection and enforcement of control measures.

Benefit

If left uncontrolled, land disturbance activities can generate significant loads of sediment which can impact both adjoining properties and downstream water bodies. Fortunately, effective controls are easy and cost-effective to implement.

Compliance

Compliance with the construction site stormwater runoff control minimum control measure requires implementation of BMPs in Part I., Section C.4 of the Permit for a minimum of 4 points total on an annual basis for each calendar year 2021 and 2022. The minimum point total requirement increases to 6 points beginning in year 2023.

A table containing the BMP summary, the measurable goal, the implementation schedule, and points per activity is included in Appendix B: Table 4.

A short description of each planned BMP is included in the table below.

Table 4. Planned BMPs to meet MCM 4 requirements

BMP ID	BMP Summary	Points			
		2021	2022	2023	2024
CS SR C - 01	Implement a requirement for a Soil Erosion and Sediment Control (SESC) Plan for any land Disturbance sites which are either equal to or greater than 1 acre or for which there is construction activity disturbing less than one acre which is part of a larger common plan of development or sale that in total disturbs one acre or more.	3	2	2	2
CS SR C - 02	Develop and adopt a design manual for erosion and sediment control BMPs which are required to be used on sites which will be disturbed and are either equal to or greater than 1 acre or for which there is construction activity disturbing less than one acre which is part of a larger common plan of development or sale that in total disturbs one acre or more.	3	2	2	2
CS SR C - 03	Provide access to at least one training class for contractors, developers or others involved with land disturbance projects which provides training on requirements for a Stormwater Pollution Prevention Plan (SWP2 Plan) and implementation of appropriate BMPs.	3	3	3	3
CS SR C - 04	Develop a site plan review process which considers potential water quality impacts which may occur during construction as well as post construction impacts.	3	2	2	2
CS SR C - 05	Establish effective requirements for construction sites to control wastes. Develop through ordinance or other enforceable means requirements for construction site operators or owners to control wastes. At a minimum control shall be imposed to prevent entry into the MS4 for the following wastes: discarded building materials, concrete truck washout, chemicals, litter, and sanitary waste.	3	2	2	2
CS SR C - 06	Develop written procedures for inspection of construction sites. Develop a Stormwater Construction Site Inspection Guide for use by municipal inspectors.	3	2	2	2
<i>Total points per year</i>		<i>18</i>	<i>13</i>	<i>13</i>	<i>13</i>

2.5 MINIMUM CONTROL MEASURE 5 (MCM 5) - POST-CONSTRUCTION STORMWATER MANAGEMENT IN NEW DEVELOPMENT AND REDEVELOPMENT

Description

This minimum control requires the development, implementation, and enforcement of a program to address post-construction stormwater runoff controls from both new development and redevelopment projects disturbing one acre or more, including projects that are less than one acre but are part of a larger common plan for development that disturbs one or more acre. KDHE requires the program to include:

- For permittees that have the authority, ordinances or resolutions to address post-construction runoff from new development and redevelopment projects to the extent allowable under state and local law.
- BMPs to prevent or minimize adverse water quality impacts.
- Strategies which include a combination of structural and/or non-structural BMPs appropriate for the municipality.
- Means to ensure adequate long-term operation and maintenance of BMPs.

Benefit

Conversion of native landscape to developed landscape increases both the volume of runoff and pollutant loads in stormwater. The consequences can include erosion, flooding, and pollution, impacting both downstream property owners and public infrastructure. Stormwater controls included in development sites can help reduce impacts and costs to both private property owners and the public.

Compliance

Compliance with the post-construction stormwater management in new development and redevelopment minimum control measure requires implementation of BMPs in Part I., Section C.5 of the Permit for a minimum of 5 points total on an annual basis for each calendar year 2021 and 2022. The minimum point total requirement increases to 7 points beginning in year 2023.

A table containing the BMP summary, the measurable goal, the implementation schedule, and points per activity is included in Appendix B: Table 5.

A short description of each planned BMP is included in the table below.

Table 5. Planned BMPs to meet MCM 5 requirements

BMP ID	BMP Summary	Points			
		2021	2022	2023	2024
P-C S M - 01	Develop and adopt a custom design manual for Post-Construction Stormwater Management which specifies various structural BMPs required for new development and re-development construction sites which are greater than 1 acre or for where there is construction activity disturbing less than one acre which is part of a larger common plan of development or sale that in total disturbs one acre or more. Alternatively, adopt and implement the APWA 5600 Stormwater Design Criteria and the MARC/APWA BMP Manual.	6	5	5	5
P-C S M - 05	Develop and implement a program for inspection of permittee owned structural BMPs which includes implementation of needed maintenance to ensure long-term operation of the BMPs	3	2	2	2
<i>Total points per year</i>		9	7	7	7

2.6 MINIMUM CONTROL MEASURE 6 (MCM 6) - POLLUTION PREVENTION/GOOD HOUSEKEEPING FOR MUNICIPAL OPERATIONS

Description

MCM 6 requires the development and implementation of an operation and maintenance and training program to reduce and prevent stormwater pollution from public facility operations such as park and open space maintenance, fleet and building maintenance, new construction and land disturbance, and stormwater system maintenance.

Benefit

Leading by example on public facilities and projects provides an opportunity to demonstrate and teach proper techniques to other landowners, and it is available on a routine and ongoing basis.

Compliance

Compliance with the post-construction stormwater management in new development and redevelopment minimum control measure requires implementation of BMPs in Part I., Section C.5 of the Permit for a minimum of 4 points total on an annual basis for each calendar year 2021 and 2022. The minimum point total requirement increases to 6 points beginning in year 2023.

A table containing the BMP summary, the measurable goal, the implementation schedule, and points per activity is included in Appendix B: Table 6.

A short description of each planned BMP is included in the table below.

Table 6. Planned BMPs to meet MCM 6 requirements.

BMP ID	BMP Summary	Points			
		2021	2022	2023	2024
P P/G H - 04	Implement a program, with guidance to municipal staff or third-party contractors, to ensure any municipal vehicle or other mechanical equipment washing is conducted in a manner which ensures the wash water is disposed of in the sanitary sewer or otherwise receives proper treatment prior to discharge to the environment.	2	1	1	1
P P/G H - 05	Implement a program for street sweeping in which the street sweepings are collected and disposed of properly or recycled/reused if possible.	3	2	2	2
P P/G H - 06	Develop an employee training program to ensure permittee's staff understand what actions they can take in the workplace to minimize stormwater pollution.	1	1	1	1
P P/G H - 08	Develop, implement and keep updated an online storm sewer map accessible to the public.	3	2	2	2
<i>Total points per year</i>		9	6	6	6

SECTION 3: Total Maximum Daily Load (TMDL) Regulated Pollutants

There are currently no TMDLs for the City of Mission.

SECTION 4: Water Quality Monitoring for TMDL Assessments

There are currently no TMDLs for the City of Mission.

SECTION 5: Permit Compliance Activities and Schedules

Year 2019:

- Annual report for 2018 submitted to KDHE by February 28, 2019

Year 2020:

- Annual report for 2019 submitted to KDHE by February 28, 2020

Year 2021:

- Updated Stormwater Management Plan submitted to KDHE by February 28, 2021
- Annual report for 2020 submitted to KDHE by February 28, 2021
- The City must implement sufficient listed BMPs to achieve minimum point requirements for 2021.

Year 2022:

- Annual report for 2021 submitted to KDHE by February 28, 2022
- The City must implement sufficient listed BMPs to achieve minimum point requirements for 2022.

Year 2023:

- Annual report for 2022 submitted to KDHE by February 28, 2023
- Provide report (in PDF format) on effectiveness of source controls and structural BMPs to attenuate pollutant discharge and achieve the measurable goals. The report must be submitted to KDHE with the 2022 Annual Report by February 28, 2023.
- The City must implement sufficient listed BMPs to achieve minimum point requirements for 2023.

Year 2024:

- Annual report for 2023 submitted to KDHE by February 28, 2024
- The City must implement sufficient listed BMPs to achieve minimum point requirements for 2023.

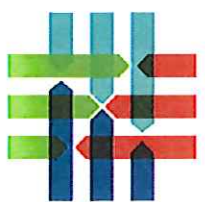
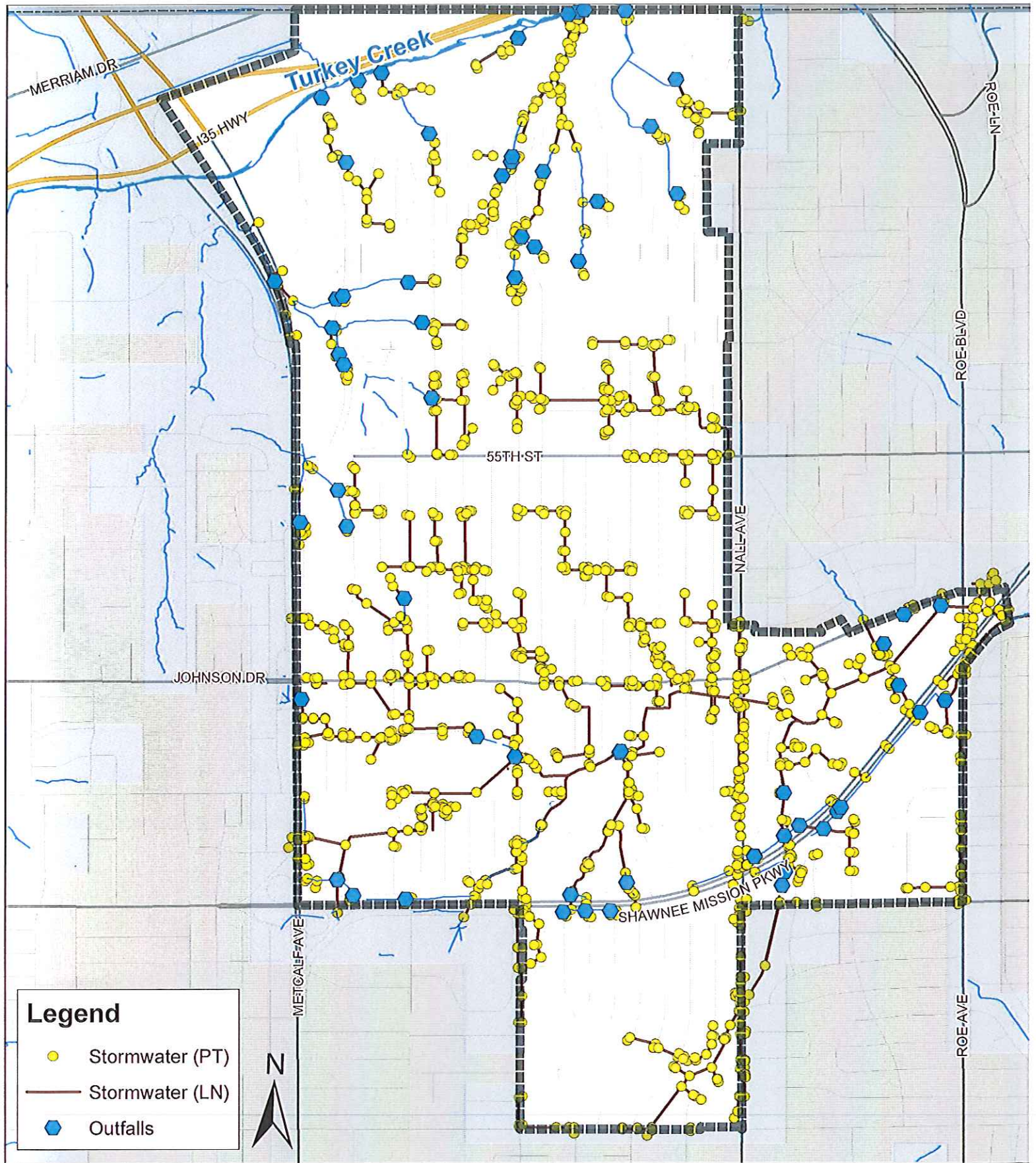
SECTION 6: Modifications to the Stormwater Management Plan

This SMP will be evaluated annually and modifications to the Plan, if any, will be submitted with the annual report.

For minor BMPs modifications/replacement: Within 60 days of a determination by the permittee or date of written notification from KDHE, the permittee shall modify the BMP if modifications are needed to maintain a program in compliance with this permit.

For major BMP modifications/replacement: These major modifications are defined as ones which normally take more than 60 days to construct and/or implement. Within 60 days of a determination by the permittee or date of notification from KDHE, the permittee shall provide a plan and schedule for the update/replacement of the BMP. The plan and schedule are subject to KDHE approval.

APPENDIX A
Map of Permitted Area



mission
Kansas

Storm Sewer Map

APPENDIX B
Tables 1-6 Planned BMPs for Permit Compliance

Appendix A- Table 1. Planned BMPs for Public Education and Outreach (MCM 1) compliance.

BMP ID	BMP Summary	Measurable Goal	Implementation Time Schedule etc.	Points	2021	2022	2023	2024
P Ed & 0 - 01	Maintain a stormwater webpage for the permittee.	Maintain the webpage with up to date information with all links effective and valid information. Check all links and update website as necessary on a minimum monthly basis. Document monthly checks in log book and indicate changes with logged summaries.	The webpage must be available throughout the year once it is posted and initially made available. In the initial year posted it must be available for a minimum of 3 months to qualify for the points. In subsequent calendar years the points may be claimed if the webpage has been maintained throughout the twelve months.	3 points may be claimed in the first year implemented, and 2 points may be claimed for each successive year the webpage is maintained available.	3	2	2	2
P Ed & 0 - 02	Distribute educational materials (either flyers, brochures, catalog mailings, handouts, or e-mails) addressing various pertinent stormwater public education topics.	Number of all flyers, brochures, catalog mailings, handouts, or e-mails distributed in a year shall equal or exceed the most recent U.S. Census Bureau decennial housing units value for the permit area. The applicable U.S. Census housing units value shall be documented, and the number of flyers, brochures, or e-mails distributed shall also be documented. This information and copies of the flyers, brochures, or e-mails shall be retained on file.	Either flyers, brochures, catalog mailings, handouts, or e-mails are to be distributed in at least two separate batches, ideally in separate seasons (either winter, spring, summer or fall). However, the required number of flyers, brochures, or e-mails must be distributed in a single calendar year and the points can be claimed for that year.	2 points may be claimed in a year in which the required number of flyers, brochures, catalog mailings, handouts , or e-mails are distributed.	2	2	2	2
P Ed & 0 - 05	Post the municipality's MS4 permit and SMP document on either the stormwater web page or the municipal webpage.	The two documents must be posted for at least six months of the year to claim one point.	Months for which the posting occurs must be within the year for which points are claimed. No "carryover" of months from one year to the next.	1 point may be claimed for posting each year (minimum of at least six months).	1	1	1	1
P Ed & 0 - 06	Provide either a stormwater telephone hotline or web based or text message method for public reporting of illicit discharges.	Respond to all reported complaints within 10 days and, if found valid, resolve or establish a schedule for resolution within 20 days. Actual resolution may take more than 20 days, but the schedule for resolution must be finalized and the efforts to implement resolution must begin within 20 days following receipt of complaint. Document complaints and response/resolution process for all complaints received in the year. Resolution of an illicit discharge can include, but is not limited to; elimination of the discharge; on- site treatment to allow discharge to the MS4 (normally requires an NPDES permit); redirecting the discharge to a location that the discharge is not considered illicit, i.e., sanitary sewer or to holding tanks to allow the waste to be hauled off for appropriate treatment, reuse/recycle or disposal.	The hotline/reporting system must be available to the public for at least six months in the year to claim the points.	2 points may be claimed for each year the hotline/ reporting system is maintained and available. An additional point may be claimed for each illicit discharge resolved in the year up to a limit of 2 additional points per year. One point allowed per illicit discharge resolved.	2	2	2	2
P Ed & 0 - 08	Provide stormwater education for students at a school campus within K-12 (those grades present at the campus) within the permittee's jurisdiction or within 30 miles from this permit area. The training may be limited to the individual campus (local school buildings associated with a single address). This training does not need to be provided to the entire school system, e.g., USD. Alternately, funding stormwater BMP installations and/or field trips at the school campus will qualify.	Provide or fund an educator or speaker that will reach at least 5% of the K-12 students as normally attend school in the selected school campus. Alternately, the funding of BMPs at the school campus may provide for any of the following: -> Installation of BMPs at the school -> Stormwater related field trips -> Water quality stream sampling activities -> Rain gardens on school property -> Rain barrel workshops -> Rain garden workshops	All of the required students (5% minimum) in K-12 at the selected campus must be educated in a single year to qualify for the points in that year. Alternately, stormwater BMPs may be funded at a school campus where students may participate in installation or observe operation of BMPs. Any of the items listed under measureable goals qualify.	3 points may be claimed each year this BMP is implemented in compliance with the specified requirements (provide education and/or fund stormwater BMP installations at the school campus).	3	3	3	3
Total points per year					11	10	10	10
Minimum required points					4	4	7	7

Appendix A- Table 2. Planned BMPs for Public Participation and Involvement (MCM 2) compliance.

BMP ID	BMP Summary	Measurable Goal	Implementation Time Schedule, etc	Points	2021	2022	2023	2024
P I/P - 03	Hold park or stream bank clean-up events for public volunteers to aid municipal staff in removing trash, debris, or pollutant sources from the selected clean-up area.	Clean an area which must be equal to or greater than one acre or alternately at least 200 yards of streambank. Alternately, for municipalities with less than 500 population clean an area which must be equal to or greater than a quarter of an acre or alternately at least 100 feet of streambank.	At least one such clean-up activity must occur in the year for which points are claimed.	3 points may be claimed each year this BMP is implemented in compliance with the specified requirements .	3	3	3	3
P I/P - 05	Provide at least two events for residents to engage in cleanup activities and improve water quality in the municipality.	Provide at least two events in streams, streamside parks, areas adjacent to public waterways, and/or other green infrastructure/water resources. These events can be any of the following: Environmental restoration events, stream cleanups, tree plantings, or stream monitoring.	At least two events in compliance with the stated goals must be conducted within the year for which points are claimed.	3 points may be claimed each year this BMP is implemented in compliance with the specified requirements.			3	3
P I/P - 06	Establish a program to encourage residents to install stormwater treatment best management practices on their property.	Encouragement can include funding, grants, and other financial incentives, trainings and or giveaways. Stormwater treatment BMPs can include: rain barrels, rain gardens, native plantings, native trees, cisterns and vegetated swales. Record participation numbers annually.	One or more of the listed methods of encouragement must be implemented in the year for which points are claimed.	2 points may be claimed each year this BMP is implemented in compliance with the specified requirements, with the addition of 1 additional point (for a total of 3 points in the year) each year that participation increases 10% from the previous year.	2	2	2	2

Total points per year5588

Minimum required points3366

Appendix A- Table3. Planned BMPs for Illicit Discharge Detection and Elimination (MCM 3) compliance.

BMP ID	BMP Summary	Measurable Goal	Implementation Time Schedule, etc	Points	2021	2022	2023	2024
ID D & E - 03	Develop a spill response plan and, if appropriate, coordinate emergency response with other agencies or organizations.	The plan shall include, at a minimum, explanation of appropriate spill response activities for spills associated with vehicle accidents, at grade or above ground storage tanks, and vehicle fluids from mechanical equipment such as construction equipment, cars, or trucks. The written plan shall be maintained on file.	The plan may be implemented in any year and points claimed for the initial implementation or for each year the plan remains effective.	3 points may be claimed in the year initially implemented, and 2 points may be claimed for each successive year the plan remains effective.	3	2	2	2
ID D & E - 04	Implement a program to evaluate MS4 outfalls to identify illicit discharges. Inspect at least 5% of the known MS4 outfalls during a calendar year and evaluate the ones which have dry weather discharges. Evaluate the water quality of the dry weather discharges to recognize non- stormwater contributions and trace the source of any illicit discharge.	When at least 5% of the known MS4 outfalls are inspected and for which at least one outfall was identified as discharging (entirely or partially) flow from an illicit discharge, the allotted points may be claimed in the year when the illicit discharge is eliminated. Document the MS4 outfalls inspected, the outfalls with dry weather discharges and the MS4 outfalls associated with illicit discharges.	The evaluation of a group of at least 5% of the known MS4 outfalls may be completed all in one year or may occur in up to two consecutive years and a point can be claimed. The larger number of points may be claimed only for the year in which the illicit discharge(s), associated with this group of evaluated outfalls is/are eliminated.	1 point may be claimed in the year when a total of at least 5% of the known MS4 outfalls are finally inspected, and 2 additional points may be claimed in which the illicit discharge(s), associated with this group of evaluated outfalls is/are eliminated.	1	1	1	1
ID D & E - 07	Implement a Household Hazardous Waste Collection Program (HHWCP) or document others have implemented such a program to provide such service to all property owners or residents located within the permit area.	Document the residents and property owners within the MS4 permit area were able to dispose of such wastes at the HHWCP during a calendar year. Retain this documentation on file.	The property owners or residents located within the permit area must be able to dispose of waste accepted by the HHWCP throughout a calendar year. Points may be claimed for any such year.	3 points may be claimed for any year in which this BMP was implemented in compliance with the requirements.	3	3	3	3
ID D & E - 10	Inspect, 5% of the MS4 system Stormwater inlets and/or outfalls within the permit area all conducted within a 12-month period to aid in identifying illicit discharges. If in a 12-month period 15% of the MS4 system inlets and/or outfalls are inspected a higher point value may be claimed in the year the required percentage of inspections are completed.	Generate a summary report of the inspection including the number of inlets and/or outfalls visually inspected , condition comments, illicit discharges identified and the results of efforts to eliminate illicit discharges, e.g., discharge line disconnected and redirected to the sanitary sewer or discharge practice terminated.	The inspection process can occur in a single calendar year or may be conducted over a period extending from one year into the succeeding year. Points may be claimed in the year when the televised and/or visual inspection of this portion of the MS4 system. Points may be claimed in the year when the televised and/or visual inspection of this portion of the MS4 system (either 2% or 15%) is completed.	3 points may be claimed for inspection of 2% of the MS4 system in the year the required percentage of inlets and/or outfalls are finally inspected, alternately if 15% of the MS4 system is inspected, 5 points may be claimed.	3*	3*	3*	3*
Total points per year					10	9	9	9
Minimum required points					5	5	7	7

*=3 points may be claimed for inspection of 2% of the MS4 system in the year the required percentage of inlets and/or outfalls are finally inspected. Alternatively, if 15% of the MS4 system is inspected 5 points may be claimed.

Appendix A- Table 4. Planned BMPs for Construction Site Stormwater Runoff Control (MCM 4) compliance.

BMP ID	BMP Summary	Measurable Goal	Implementation Time Schedule, etc	Points	2021	2022	2023	2024
CS SR C - 01	Implement a requirement for a Soil Erosion and Sediment Control (SESC) Plan for any land Disturbance sites which are either equal to or greater than 1 acre or for which there is construction activity disturbing less than one acre which is part of a larger common plan of development or sale that in total disturbs one acre or more.	Enact a regulatory ordinance , or other enforceable measure that requires an SESC Plan for all developments disturbing sites which are either equal to or greater than 1 acre or for which there is construction activity disturbing less than one acre which is part of a larger common plan of development or sale that in total disturbs one acre or more.	Points may be claimed in the year the ordinance/enforceable requirement first becomes effective, and for each full calendar year thereafter for which the ordinance/enforceable requirement remains effective.	3 points may be claimed in the year the ordinance initially becomes effective, and 2 points may be claimed for each successive year thereafter for which the ordinance remains effective.	3	2	2	2
CS SR C - 02	Develop and adopt a design manual for erosion and sediment control BMPs which are required to be used on sites which will be disturbed and are either equal to or greater than 1 acre or for which there is construction activity disturbing less than one acre which is part of a larger common plan of development or sale that in total disturbs one acre or more.	Require implementation of BMPs in compliance with the design manual on all sites which meet the disturbed area standard as specified in the BMP Summary.	Points may be claimed for the year which the manual is initially adopted and implemented, and a reduced number of points may be claimed for subsequent years in which the manual remains implemented.	3 points may be claimed in the year the manual is initially implemented, and 2 points may be claimed for each successive year the manual remains effective.	3	2	2	2
CS SR C - 03	Provide access to at least one training class for contractors, developers or others involved with land disturbance projects which provides training on requirements for a Stormwater Pollution Prevention Plan (SWP2 Plan) and implementation of appropriate BMPs.	This training class must address all local requirements for a SWP2 Plan, requirements for implementation of BMPs and address the requirements for permits.	Points may be claimed for the year in which the training class is held.	3 points	3	3	3	3
CS SR C - 04	Develop a site plan review process which considers potential water quality impacts which may occur during construction as well as post construction impacts.	Review process must have written guidance for the reviewer. Issuance of a building permit or approval to start construction may not be provided until the site plan has successfully passed the review process either based on the initial site plan submittal or has been modified to comply with requirements identified during the review process. Measures must be included to enforce the installation of water quality BMPs included in the site plan.	Points may be claimed in the year the review process is initially developed and implemented. Also points may be claimed in each subsequent year the review process continues to be implemented.	3 points may be claimed in the year the review process is initially developed and implemented, 2 points may be claimed for each successive year the review process continues to be implemented.	3	2	2	2
CS SR C - 05	Establish effective requirements for construction sites to control wastes. Develop through ordinance or other enforceable means requirements for construction site operators or owners to control wastes. At a minimum control shall be imposed to prevent entry into the MS4 for the following wastes: -> discarded building materials -> concrete truck washout -> chemicals -> litter, and -> sanitary waste.	Enact ordinance or other effective means to achieve control of wastes at construction sites.	Points may be claimed in the year of enactment. Also points may be claimed in each subsequent year the method of effective control of construction site waste remains in effect.	3 points may be claimed in the year of enactment, 2 points may be claimed for each successive year the method of effective control of construction site waste remains in effect.	3	2	2	2
CS SR C - 06	Develop written procedures for inspection of construction sites. Develop a Stormwater Construction Site Inspection Guide for use by municipal inspectors.	The procedures document must address the administrative aspects associated with required inspections of construction sites, the issuance of inspection reports, notices of violations, and enforcement actions. The Inspection Guide must provide inspectors guidance on how to conduct a construction site stormwater inspection, the required procedures, and guidance on acceptable conditions of various BMPs employed on such sites, enforcement actions and/or reference of cases for enforcement by other municipal staff, guidance on photo log of the inspection and inspection checklists for use by the inspector.	Development of the written procedures and the Inspection Guide can occur in any year. Initial implementation can allow points to be claimed in that year and continued implementation can allow points to be claimed in subsequent years.	3 points may be claimed in the year of initial development, 2 points may be claimed for each successive year the written procedures and inspection guide continue to be utilized.	3	2	2	2

Total points per year18131313

Minimum required points4466

Appendix A- Table 5. Planned BMPs for Post-Construction Stormwater Management for New Development and Re-development (MCM 5) compliance.

BMP ID	BMP Summary	Measurable Goal	Implementation Time Schedule, etc	Points	2021	2022	2023	2024
P-C SM - 01	Develop and adopt a custom design manual for Post-Construction Stormwater Management which specifies various structural BMPs which are required for new development and re-development construction sites which are greater than 1 acre for which there is construction activity disturbing less than one acre which is part of a larger common plan of development or sale that in total disturbs one acre or more. Alternatively, adopt and implement the APWA 5600 Stormwater Design Criteria and the MARC/APWA BMP Manual.	<p>The custom design manual shall impose requirements to achieve at least one of the following standards:</p> <p>-> Capture, at least, the first 0.5 inches of precipitation on the development/re-development site and utilize methods to prevent discharge off-site, including but not limited to:</p> <p>Retain on-site Infiltrate Evaporate Transpire Or beneficially reuse</p> <p>-> Through implementation of appropriate BMP(s) reduce the peak stormwater flow rate to a value equal to or less than the rate which would be experienced on the site prior to the development/re-development project based upon modeling a standard storm event, e.g. 1.0 inch- 6-hour event assuming saturated soil conditions.</p> <p>-> Other sizing or detention standards generally accepted by design engineers as adequate for the permittee's local.</p> <p>As an alternative to a custom design manual the APWA 5600 Stormwater Design Criteria and the MARC/APWA BMP Manual may be adopted and implemented. Measures must be included to enforce the installation of the various structural BMPs required.</p>	Development of the design manual can occur in any year. Initial implementation can allow points to be claimed in that year and continued implementation can allow points to be claimed in subsequent years.	4 points may be claimed in the year of initial implementation of a custom design manual - alternately 6 points may be claimed in the year of initial implementation of the APWA 5600 stormwater design criteria and the MARC/APWA BMP Manual, 3 points may be claimed for each successive year compliance with the custom design manual is required/implemented. Alternately, 5 points may be claimed in each successive year the implementation of the APWA 5600 stormwater design criteria and the MARC/APWA BMP Manual is required/implemented.	6	5	5	5
P-C S M - 05	Develop and implement a program for inspection of permittee owned structural BMPs which includes implementation of needed maintenance to ensure long-term operation of the BMPs	<p>The program shall require inspection of at least 10% of the structural BMPs on an annual basis.</p> <p>Identified maintenance activities shall be completed:</p> <p>1. In the same year of inspection or</p> <p>2. completed as dictated by the permittee's maintenance/O&M plan</p> <p>3. or a written plan for completion of the necessary maintenance shall be completed in the same year of inspection with the objective for completion of the maintenance activity within 18 months.</p>	The program shall be developed and implemented within a single year.	3 points may be claimed in the year the program is initially developed and implemented, 2 points may be claimed for each successive year the program continues to be implemented.	3	2	2	2

Total points per year	9	7	7	7
Minimum required points	5	5	7	7

Appendix A- Table 6. Planned BMPs for Pollution Prevention/Good Housekeeping For Municipal Operations (MCM 6) compliance.

BMP ID	BMP Summary	Measurable Goal	Implementation Time Schedule, etc	Points	2021	2022	2023	2024
P P/G H - 04	Implement a program, with guidance to municipal staff or third-party contractors, to ensure any municipal vehicle or other mechanical equipment washing is conducted in a manner which ensures the wash water is disposed of in the sanitary sewer or otherwise receives proper treatment prior to discharge to the environment.	Maintain proper wash facilities for municipal staff to wash vehicles and/or equipment or implement a program which includes guidance to municipal staff to take vehicles and/or equipment to commercial wash facilities, either of which ensures the wash water is conveyed to the sanitary sewer, or otherwise receives proper treatment prior to discharge to the environment, and not discharged untreated to the MS4 or directly to the environment.	The guidance document must be finalized and implemented in the year which points are initially claimed.	2 points may be claimed in the year the guidance document is finalized and implemented, 1 point may be claimed for each successive year the guidance document continues to be implemented. 1 point may be claimed for each successive year the guidance document continues to be implemented.	2	1	1	1
P P/G H - 05	Implement a program for street sweeping in which the street sweepings are collected and disposed of properly or recycled/reused if possible.	All paved streets which can be swept shall be listed in the schedule for street sweeping. A log shall be maintained listing the street segments which are swept and, dates of sweeping and where the street sweepings are disposed or where the material was sent to be recycled and/or reused. Alternatively, for municipalities with less than 500 population street sweeping can be limited to sweeping the gutters. The log which must be maintained need only indicate the street segments which were swept in the year and confirm the sweepings were properly disposed or recycled and/or reused	At least 10% of the streets which are listed in the street sweeping schedule must be swept at least once in a year to claim points for the year. In years when street sweeping equipment is purchased for use by the permittee additional points may be claimed. Alternately, for municipalities with less than 500 population at least 5% of the street gutters which can be swept must be swept in a year to claim points for the year.	3 points may be claimed in the year at least 10% of the listed streets are swept and street sweeping equipment is purchased, 2 points may be claimed for each year at least 10% of the listed streets are swept or alternately for municipalities with less than 500 population if at least 5% of the street gutters which can be swept are swept in a year 2 points may be claimed.	3	2	2	2
P P/G H - 06	Develop an employee training program to ensure permittee's staff understand what actions they can take in the workplace to minimize stormwater pollution.	Provide guidance documents in the form of either fact sheets, flyers or e-mails to staff to coach them in appropriate actions they can take while working to minimize stormwater pollution. Alternately, provide in-person training or videos with sign-in- sheets for signature documentation of personal or video training. Retain copies of the guidance documents and/or sign-in-sheets. A log of when the guidance was distributed, or training was provided to staff should be maintained. Provide appropriate guidance and/or training to staff a minimum of twice per year.	For each year in which staff receive guidance documents or in-person training or video training on two separate dates, points may be claimed for the year.	In years when guidance documents or training (in- person or video) are provided on two separate dates 1 point may be claimed.	1	1	1	1
P P/G H - 08	Develop, implement and keep updated an online storm sewer map accessible to the public.	Map shall cover the entire MS4 within the permit area and include all the MS4 lines both pipe and open drainage (i.e. ditches) and shall also illustrate all impaired waterways (i.e. 303(d) listed and TMDL listed streams/rivers) with an indication of the listed impairment.	For each year in which the map is posted online points may be claimed. In the first year the map is posted it must be posted for at least six months for points to be claimed.	3 points may be claimed in the first year, 2 points may be claimed for each year thereafter for which the map remains posted.	3	2	2	2

Total points per year9666

Minimum required points4466