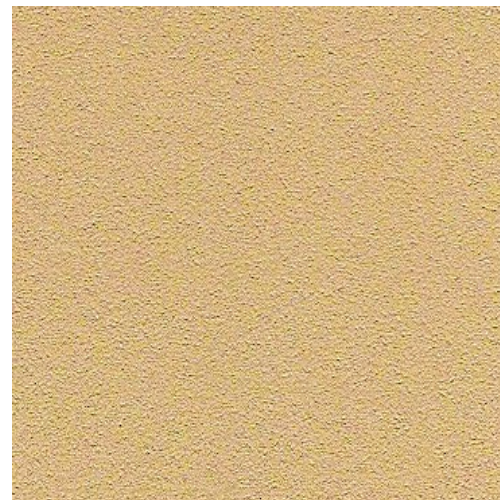




ST-1 DRYVIT STUCCO -
OYSTER SHELL # 456



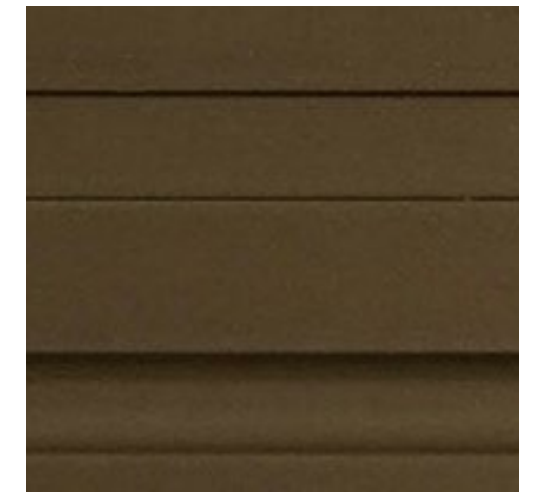
ST-2 DRYVIT STUCCO -
ALMOND #462



CS-1 MIDWEST CAST STONE -
25AC



PRE-1 PRECAST PANEL -
COLOR TO MATCH CS-1



MT-1 KAWNEER -
MEDIUM BRONZE



SF-1 KAWNEER GLAZING - CLEAR



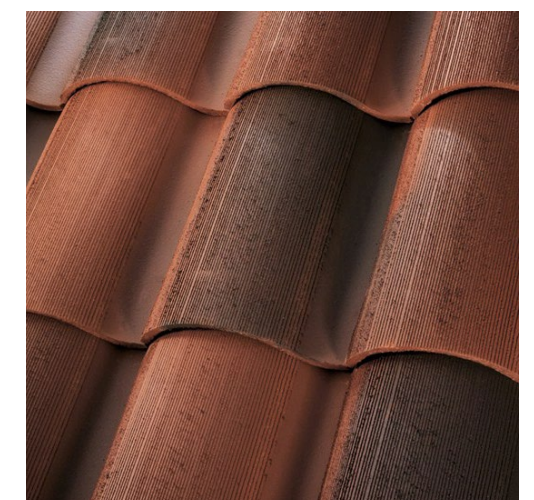
SV-1 STONE VENEER - NATURAL
STONE VENNERS BROOKWOOD /
ASPEN



SV-2 STONE VENEER -
GLEN GERY - CREATIVE MINES -
JUTE



WD-1 SYNTHETIC WOOD - FAUX
WOOD BEAMS - WALNUT COLOR
AND PROFILE



TL-1 SPANISH ROOF TILE -
BORAL - RUSTIC NEWPORT



TL-2 MOSAIC SPANISH TILE -
SPANISH PATTERNED

FINISH SCHEDULE				
SYMBOL	MATERIAL	MANUFACTURER	COLOR	TEXTURE / FINISH
CS-1	CAST STONE	MIDWEST CAST STONE	25 AC	SANDBLAST
ST-1	STUCCO	DRYVIT - ACRYLIC FINISH	OYSTER SHELL #456	FREESTYLE
ST-2	STUCCO	DRYVIT - ACRYLIC FINISH	ALMOND #462	FREESTYLE
MT-1	ALUMINUM	KAWNEER	DARK BRONZE	CLEAR
PRE-1	PRECAST PANEL	TBD	ACID WASH - LIMESTONE	ACID WASH
PT-1	PAINT	SHERWIN WILLIAMS	TO MATCH WD-1	TBD
SF-1	GLAZING	KAWNEER	CLEAR	MULLIONS TO MATCH MT-1
SV-1	STONE VENEER	NATURAL STONE VENEERS	BROOKWOOD / ASPEN	LOW PROFILE SPLIT FACE
SV-2	STONE VENEER	GLEN GERY - CREATIVE MINES	JUTE	CRAFT CHISELED RECTANGLE
WD-1	SYNTHETIC WOOD	FAUX WOOD BEAMS	WALNUT	WALNUT
TL-1	CONC. SPANISH ROOF TILE	BORAL	RUSTIC NEWPORT	RUSTIC NEWPORT
TL-2	MOSAIC SPANISH TILE	TBD	SPANISH PATTERNED	SMOOTH ACRYLIC FINISH

* FINAL MATERIAL COLORS AND TEXTURES TO BE DECIDED AT TIME OF FACADE MOCK-UP BY OWNER AND CITY

MATERIALS BOARD